

Formspannsystem
zur schnellen Fixierung
von Werkstücken
Smart adaptive
clamping system
for fast fixing
of workpieces



Das modulare Formspannsystem lässt sich frei kombinieren und erweitern
 The smart adaptive clamping system can be combined and expanded as required



FlexFormModul
FlexFormModule

BasisModul
BasisModule

FixModul
FixModule

GelenkModul
JointModule

Niederhalter
Hold-down pin

Schnelle Fixierung von Werkstücken auch mit komplexen Geometrien

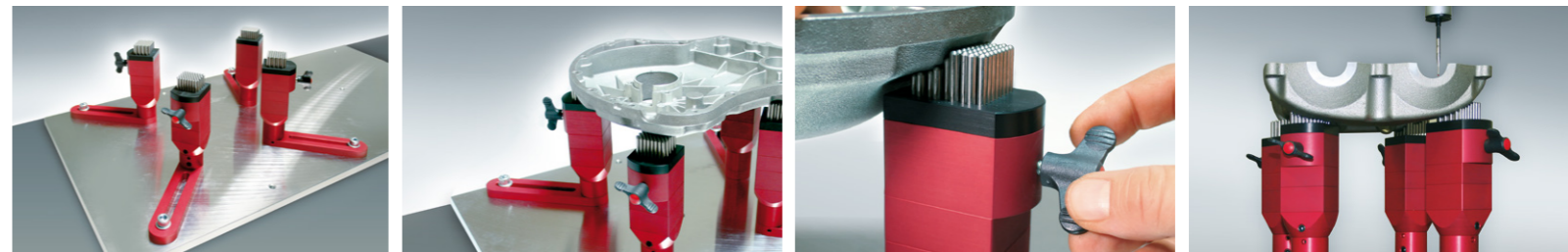
Fast fixing of workpieces even with complex shapes

Kleine Stückzahlen, Prototypen oder Kleinserien von komplex geformten Werkstücken lassen sich mit pintec schnell und unkompliziert fixieren. Aufbau und Handhabung von pintec sind leicht umzusetzen. Mit pintec ist Professionalität bei der Arbeit garantiert. Pintec findet Anwendung in Messtechnik, Montage, Laser- und Nadelbeschriftung, sowie der Automatisierungstechnik.

Small quantities, prototypes or small series of complex shaped workpieces can be fixed quickly and easily with pintec. Setup and handling of pintec are easy to implement. With pintec, professionalism at work is guaranteed. Pintec is used in measurement technology, laser and needle engraving, and automation technology.



pintec im Einsatz
pintec in action



1 Positionieren...
Position...

2 justieren...
adjust...

3 fixieren...
fix...

4 fertig!
done!

Reduzieren Sie Kosten und Rüstzeiten
Reduce assembly times and costs

pintec[®]

Das modulare Formspannsystem
Smart adaptive clamping system



pintec®

Niederhalter
Hold-down Pin

FixModul 30
FixModule 30

FixModul 40
FixModule 40

FixModul 45
FixModule 45

AnbauModul
InstallModule

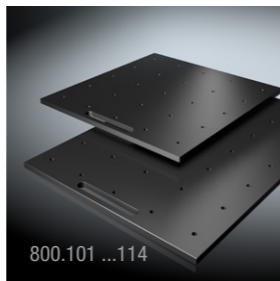
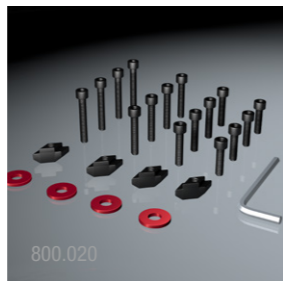
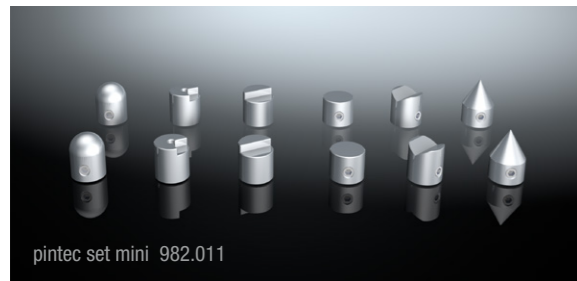
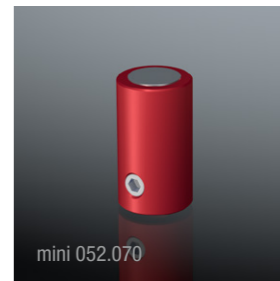
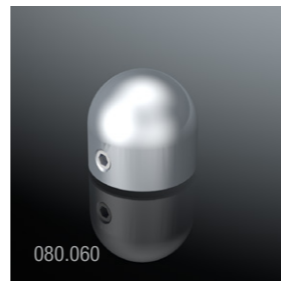
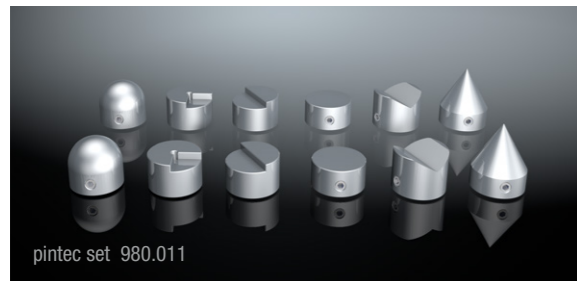
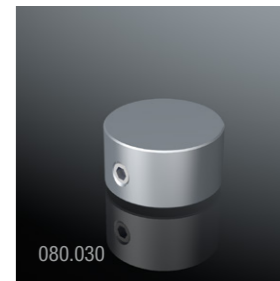
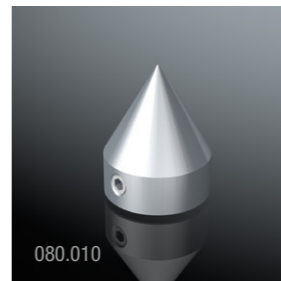
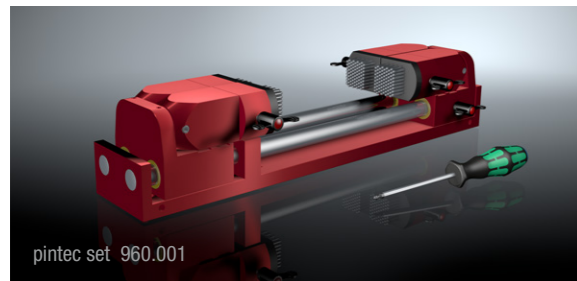
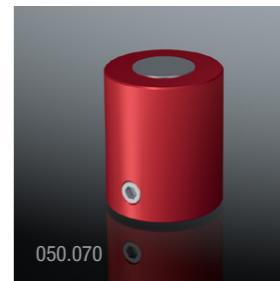
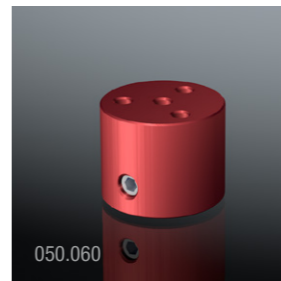
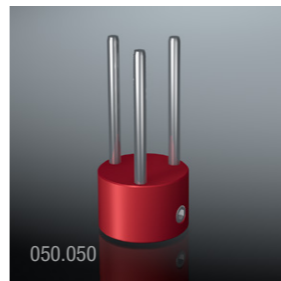
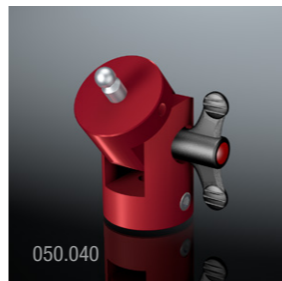
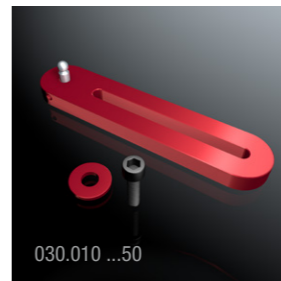
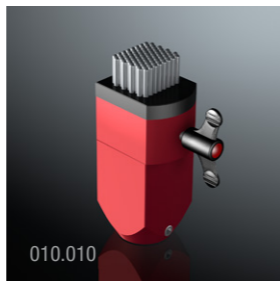
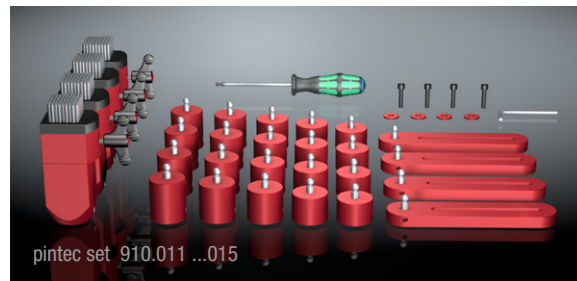
BasisModul
BasisModule

GelenkModul
JointModule

FlexformModul
FlexformModule

Rasterplatte
Baseplate





Das modulare Formspannsystem
Smart adaptive clamping system





Christian Beyer GmbH
Dieselstraße 26
71546 Aspach
Tel: +49 7191 90 454 0
info@pintec.de
www.pintec.de



pintec®