



HIGH STRENGTH ALUMINUM BASE SERIES

BPA07~BPA12



SQUARE TOOLING COLUMN DOUBLE SIDED TOOLING COLUMN

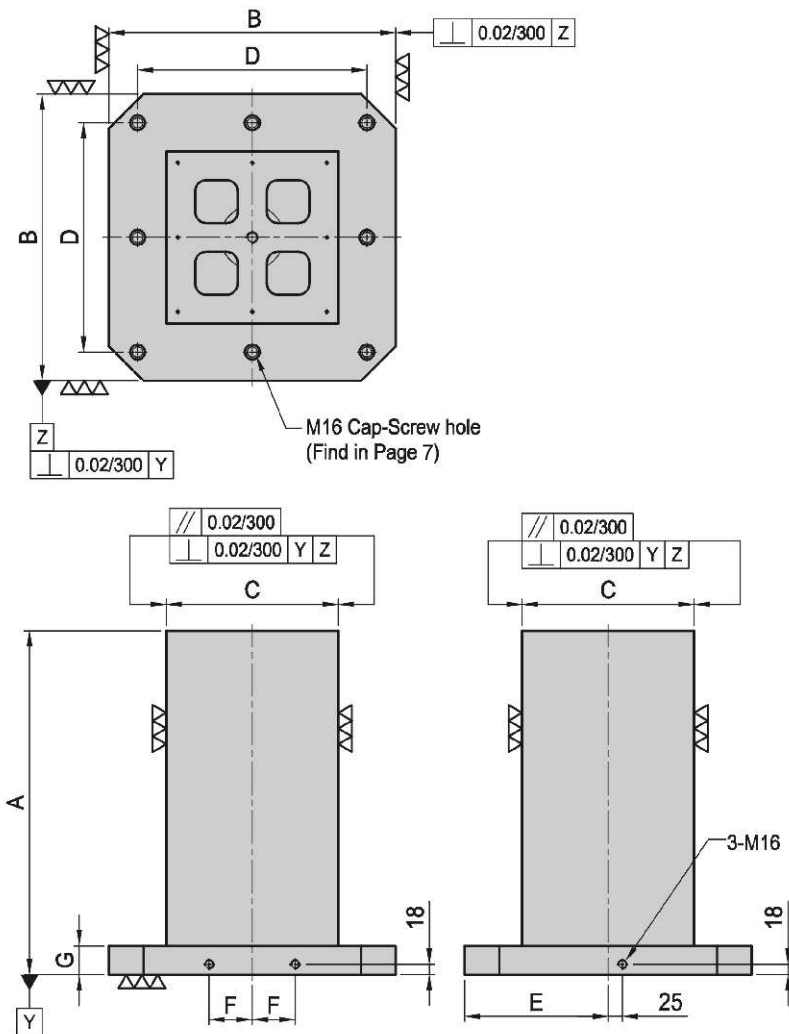




BPA07

SQUARE TOOLING COLUMN

- Material: High Strength Aluminum Casting.
- Application: Horizontal Machining Center.
- Features: Ready to accept a hole pattern for your special jig.
- Eye bolt & Top cover included.



MODEL NO.	A	B	C	D	E	F	G	Mounting holes	kg
BPA07-400400-0500	500	400	250	320	200	55	40	4	56
BPA07-400400-0650	650								73
BPA07-500500-0600	600	500	300	400	250	75	40	8	91
BPA07-500500-0750	750								122
BPA07-630630-0700	700	630	350	500	315	100	50	8	129
BPA07-630630-0850	850								180
BPA07-800800-0800	800	800	500	640	400	135	50	8	215
BPA07-800800-1000	1000								312

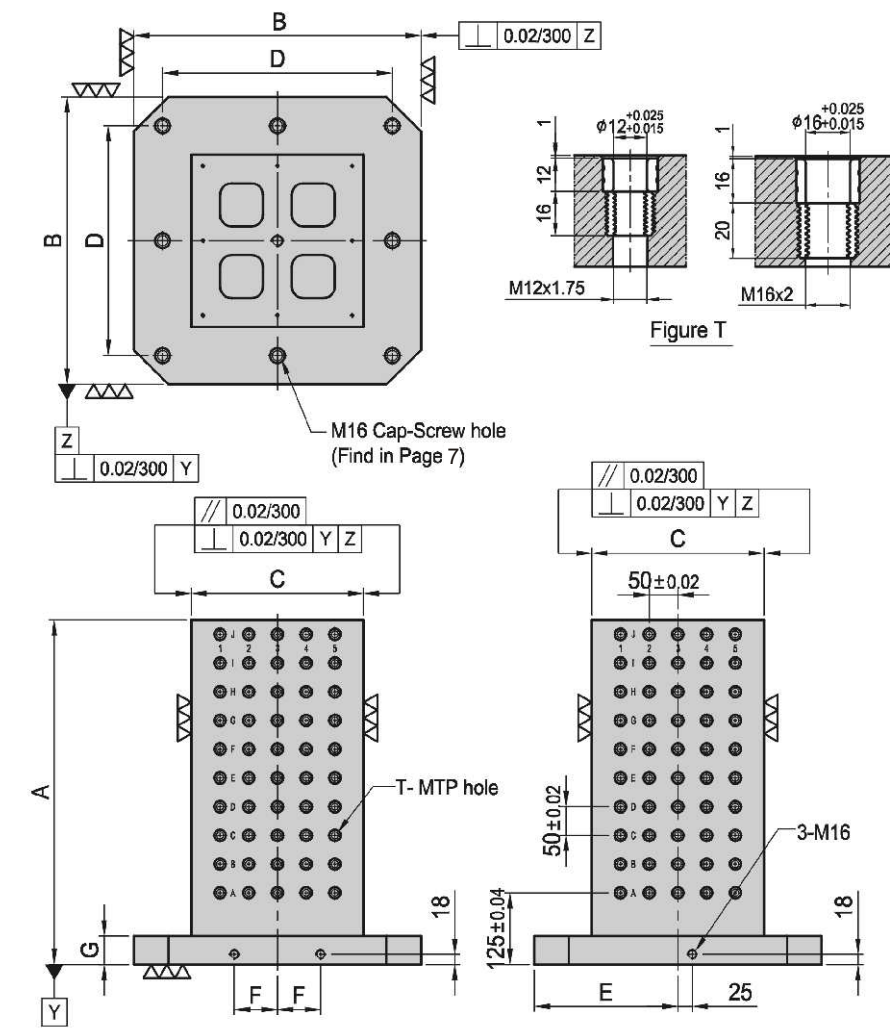
*Special Design Welcome !



BPA08

SQUARE TOOLING COLUMN

- Material: High Strength Aluminum Casting.
- Alignment bushing: SUJ2(JIS) / 100Cr6(DIN), heat treated
- Threaded Insert: S45C(JIS) / CK45(DIN), heat treated
- MTP hole spacing: 50±0.02
- Application: Horizontal Machining Center.
- Features: Alignment bushing & thread insert at every hole location, easily adapts to standardized jig components.
- Eye bolt & Top cover included.



MODEL NO.	A	B	C	D	E	F	G	T	MTP	Mounting holes	kg	MODEL NO.	A	B	C	D	E	F	G	T	MTP	Mounting holes	kg		
BPA08-400400-0500-12	500	400	250	320	200	55	40	$\phi 12$	M12	128	4	54	BPA08-400400-0500-16	500	400	250	320	200	55	40	$\phi 16$	M16	128	4	54
BPA08-400400-0650-12	650									176	73	BPA08-400400-0650-16	650	176									73		
BPA08-500500-0600-12	600	500	300	400	250	75	40	$\phi 12$	M12	200	8	88	BPA08-500500-0600-16	600	500	300	400	250	75	40	$\phi 16$	M16	200	8	88
BPA08-500500-0750-12	750									260	122	BPA08-500500-0750-16	750	260									122		
BPA08-630630-0700-12	700	630	350	500	315	100	50	$\phi 12$	M12	288	8	126	BPA08-630630-0700-16	700	630	350	500	315	100	50	$\phi 16$	M16	288	8	123
BPA08-630630-0850-12	850									360	180	BPA08-630630-0850-16	850	360									180		
BPA08-800800-0800-12	800	800	500	640	400	135	50	$\phi 12$	M12	504	8	204	BPA08-800800-0800-16	800	800	500	640	400	135	50	$\phi 16$	M16	504	8	201
BPA08-800800-1000-12	1000									648	312	BPA08-800800-1000-16	1000	648									312		

*Special Design Welcome !

- BP
- BPA
- BC
- CP
- SU
- PT
- SVF
- ALV
- OK-VISE
- OTHER
- Column for Technical Data



BPA09

SQUARE TOOLING COLUMN

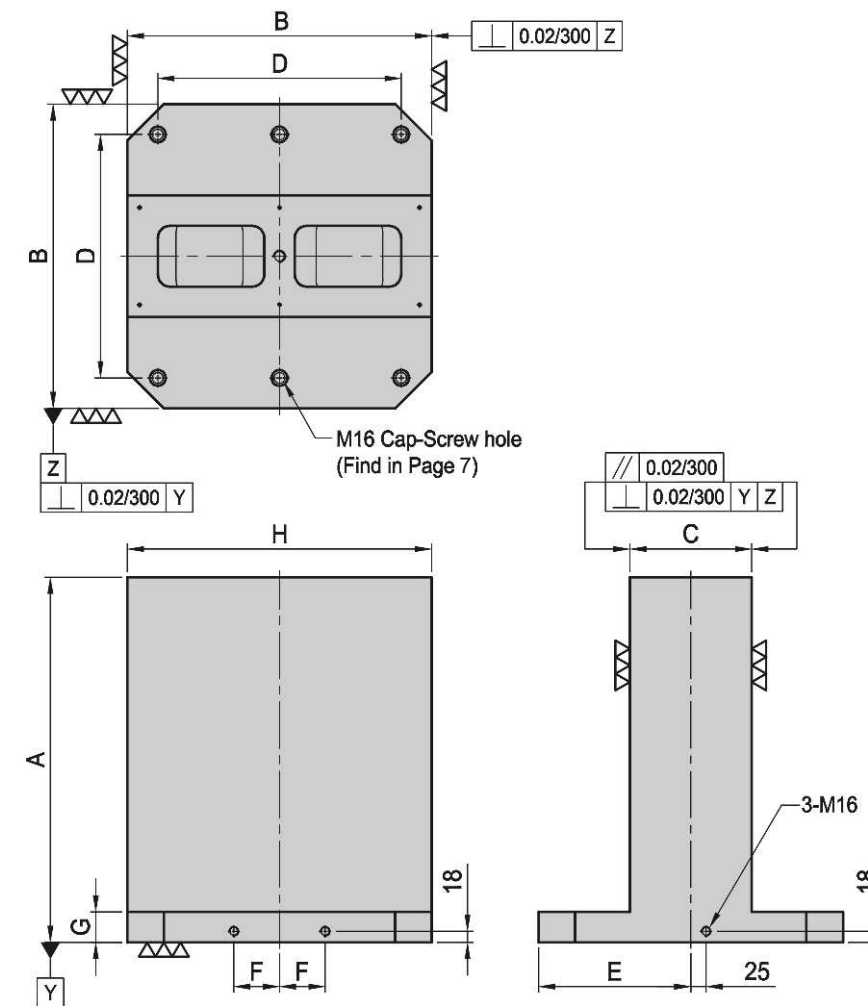
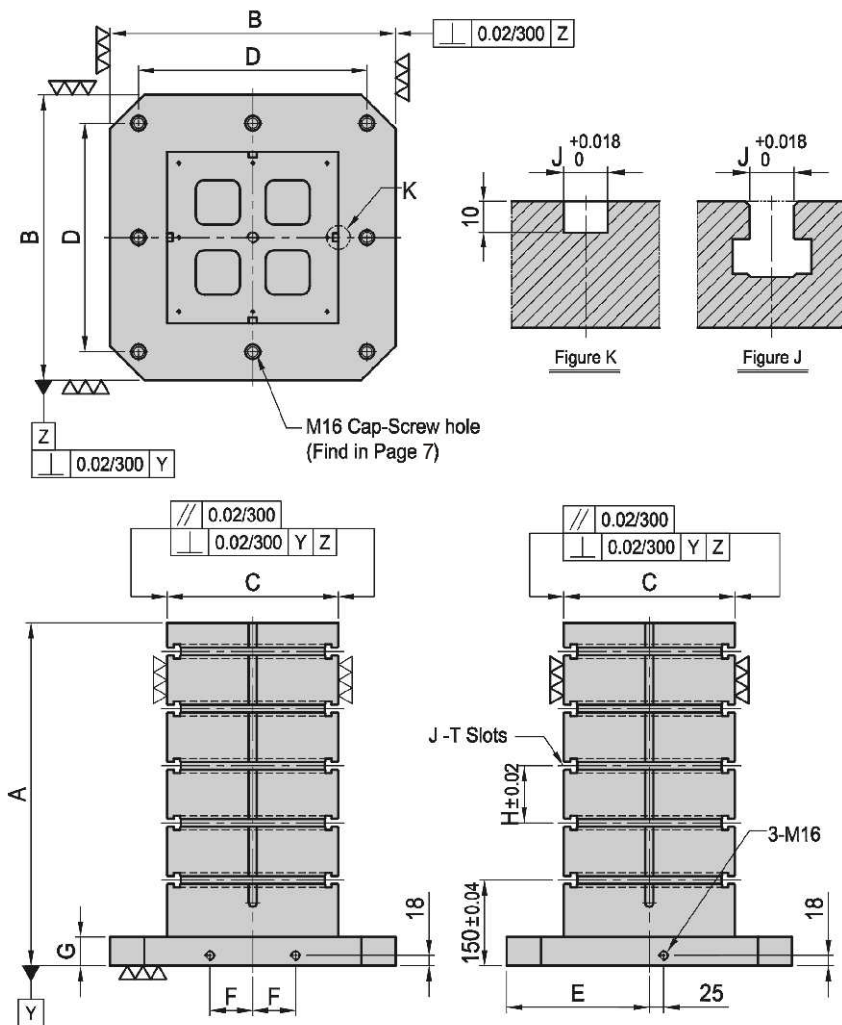
- Material: High Strength Aluminum Casting.
- Application: Horizontal Machining Center.
- Features: T-Slots running horizontally, key-way running vertically, easily adapts to standardized jig components.
- Eye bolt & Top cover included.



BPA10

DOUBLE SIDED TOOLING COLUMN

- Material: High Strength Aluminum Casting.
- Application: Horizontal Machining Center.
- Features: Ready to accept a hole pattern for your special jig.
- Eye bolt & Top cover included.



MODEL NO.	A	B	C	D	E	F	G	H	J	Mounting holes	kg
BPA09-400400-0500-14	500	400	250	320	200	55	40	100	14	4	61
BPA09-400400-0650-14	650										84
BPA09-500500-0600-14	600	500	300	400	250	75	40	100	14	8	86
BPA09-500500-0750-14	750										127
BPA09-630630-0700-14	700	630	350	500	315	100	50	125	14	8	136
BPA09-630630-0850-14	850										183
BPA09-800800-0800-14	800	800	500	640	400	135	50	150	14	8	260
BPA09-800800-1000-14	1000										319

MODEL NO.	A	B	C	D	E	F	G	H	J	Mounting holes	kg
BPA09-400400-0500-18	500	400	250	320	200	55	40	100	18	4	60
BPA09-400400-0650-18	650										84
BPA09-500500-0600-18	600	500	300	400	250	75	40	100	18	8	85
BPA09-500500-0750-18	750										135
BPA09-630630-0700-18	700	630	350	500	315	100	50	125	18	8	135
BPA09-630630-0850-18	850										183
BPA09-800800-0800-18	800	800	500	640	400	135	50	150	18	8	254
BPA09-800800-1000-18	1000										319

*Special Design Welcome !

MODEL NO.	A	B	C	D	E	F	G	H	Mounting holes	kg
BPA10-400400-0500	500	400	150	320	200	55	40	400	4	62
BPA10-400400-0650	650									86
BPA10-500500-0600	600	500	200	400	250	75	40	500	6	96
BPA10-500500-0750	750									135
BPA10-630630-0700	700	630	250	500	315	100	50	630	6	176
BPA10-630630-0850	850									202
BPA10-800800-0800	800	800	300	640	400	135	50	800	6	217
BPA10-800800-1000	1000									318

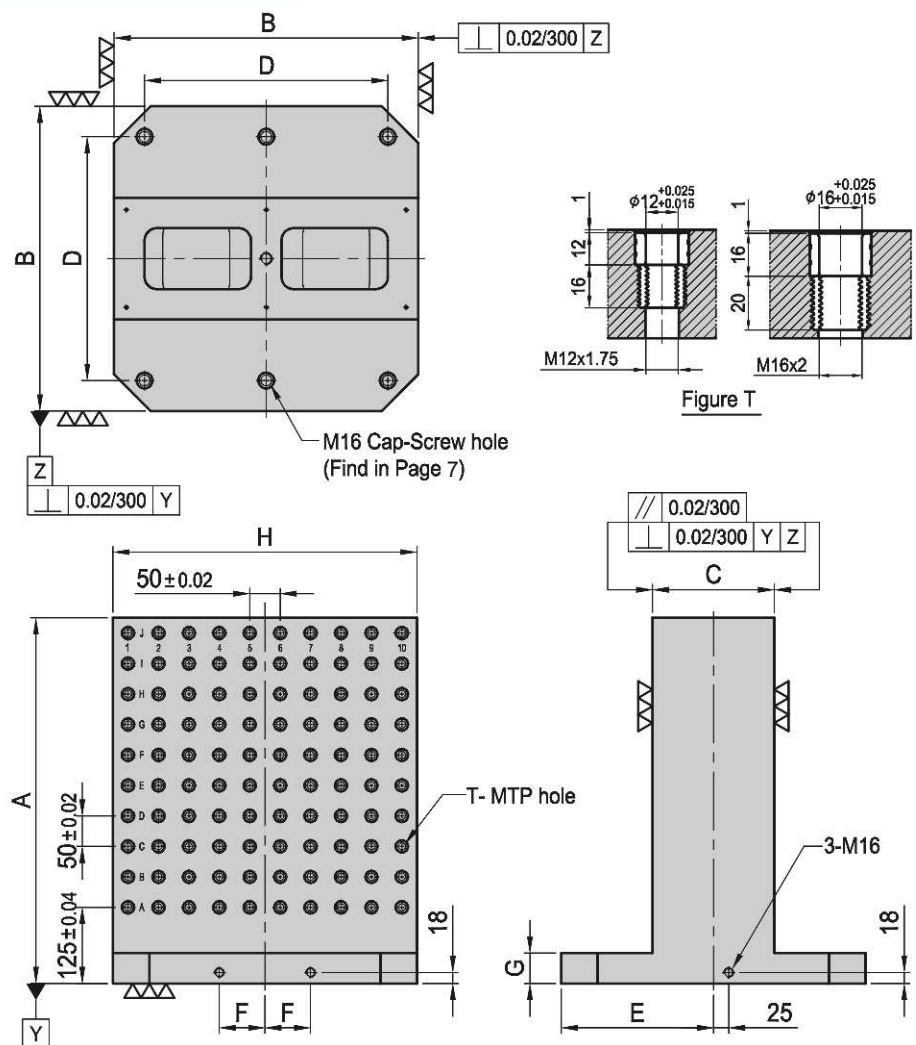
*Special Design Welcome !



BPA11

DOUBLE SIDED TOOLING COLUMN

- Material: High Strength Aluminum Casting.
- Alignment Bushing: SUJ2(JIS) / 100Cr6 (DIN), heat treated
- Threaded Insert: S45C(JIS) / CK45(DIN), heat treated
- MTP hole spacing: 50±0.02
- Application: Horizontal Machining Center.
- Features: Alignment bushing & thread insert at every hole location, easily adapts to standardized jig components.
- Eye bolt & Top cover included.



MODEL NO.	A	B	C	D	E	F	G	H	T	MTP	Mount- ing holes	kg
BPA11-400400-0500-12	500	400	150	320	200	55	40	400	$\phi 12$	M12	128	56
BPA11-400400-0650-12	650	400	150	320	200	55	40	400	$\phi 12$	M12	176	86
BPA11-500500-0600-12	600	500	200	400	250	75	40	500	$\phi 12$	M12	200	91
BPA11-500500-0750-12	750	500	200	400	250	75	40	500	$\phi 12$	M12	260	135
BPA11-630630-0700-12	700	630	250	500	315	100	50	630	$\phi 12$	M12	288	154
BPA11-630630-0850-12	850	630	250	500	315	100	50	630	$\phi 12$	M12	360	202
BPA11-800800-0800-12	800	800	300	640	400	135	50	800	$\phi 12$	M12	420	214
BPA11-800800-1000-12	1000	800	300	640	400	135	50	800	$\phi 12$	M12	540	318

MODEL NO.	A	B	C	D	E	F	G	H	T	MTP	Mount- ing holes	kg
BPA11-400400-0500-16	500	400	150	320	200	55	40	400	$\phi 16$	M16	128	60
BPA11-400400-0650-16	650	400	150	320	200	55	40	400	$\phi 16$	M16	176	86
BPA11-500500-0600-16	600	500	200	400	250	75	40	500	$\phi 16$	M16	200	103
BPA11-500500-0750-16	750	500	200	400	250	75	40	500	$\phi 16$	M16	260	135
BPA11-630630-0700-16	700	630	250	500	315	100	50	630	$\phi 16$	M16	288	170
BPA11-630630-0850-16	850	630	250	500	315	100	50	630	$\phi 16$	M16	360	202
BPA11-800800-0800-16	800	800	300	640	400	135	50	800	$\phi 16$	M16	420	210
BPA11-800800-1000-16	1000	800	300	640	400	135	50	800	$\phi 16$	M16	540	318

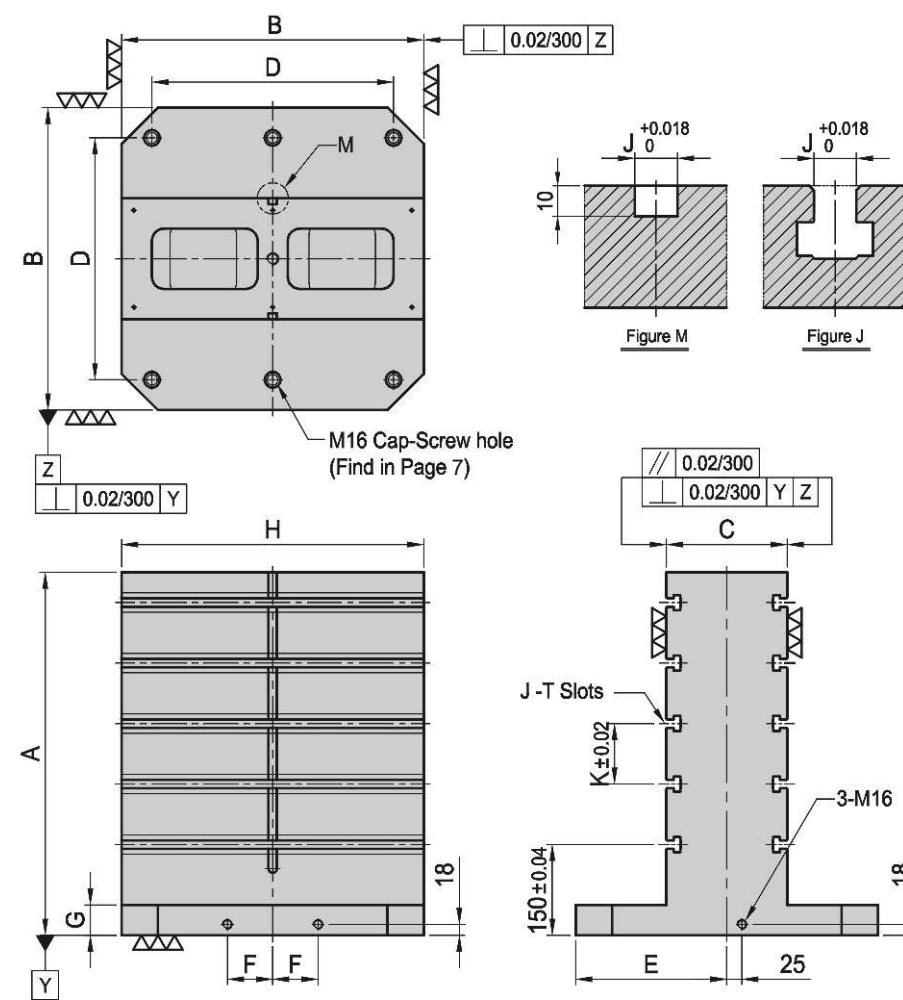
*Special Design Welcome !



BPA12

DOUBLE SIDED TOOLING COLUMN

- Material: High Strength Aluminum Casting.
- Application: Horizontal Machining Center.
- Features: T-Slots running horizontally, key-way running vertically, easily adapts to standardized jig components.
- Eye bolt & Top cover included.



MODEL NO.	A	B	C	D	E	F	G	H	J	K	Mount- ing holes	kg
BPA12-400400-0500-14	500	400	150	320	200	55	40	400	14	100	4	60
BPA12-400400-0650-14	650	400	150	320	200	55	40	400	14	100	4	92
BPA12-500500-0600-14	600	500	200	400	250	75	40	500	14	100	6	87
BPA12-500500-0750-14	750	500	200	400	250	75	40	500	14	100	6	142
BPA12-630630-0700-14	700	630	250	500	315	100	50	630	14	125	6	165
BPA12-630630-0850-14	850	630	250	500	315	100	50	630	14	125	6	212
BPA12-800800-0800-14	800	800	300	640	400	135	50	800	14	150	6	243
BPA12-800800-1000-14	1000	800	300	640	400	135	50	800	14	150	6	325

MODEL NO.	A	B	C	D	E	F	G	H	J	K	Mount- ing holes	kg
BPA12-400400-0500-18	500	400	150	320	200	55	40	400	18	100	4	60
BPA12-400400-0650-18	650	400	150	320	200	55	40	400	18	100	4	92
BPA12-500500-0600-18	600	500	200	400	250	75	40	500	18	100	6	86
BPA12-500500-0750-18	750	500	200	400	250	75	40	500	18	100	6	142
BPA12-630630-0700-18	700	630	250	500	315	100	50	630	18	125	6	163
BPA12-630630-0850-18	850	630	250	500	315	100	50	630	18	125	6	212
BPA12-800800-0800-18	800	800	300	640	400	135	50	800	18	150	6	240
BPA12-800800-1000-18	1000	800	300	640	400	135	50	800	18	150	6	325

*Special Design Welcome !

BP

BPA

BC

CP

SU

PT

SVF

ALV

OK-
VISE

OTHER

Column
for
Technical
Data

