



BASE SERIES

BP01~BP34, BP-SPECIAL



M/C BASE PLATE M/C CLAMPING CUBE M/C DOUBLE-SIDED ANGLE PLATE



BP01

M/C BASE PLATE



- Material / Finish:
Material: Cast Iron FC300(JIS) / GG30(DIN)
Heat treated (Normalized)
- Application: Vertical Machining Center.
- Features: Ready to accept a hole pattern for your special jig.

BP02

M/C BASE PLATE



- Material / Finish:
Material: Cast Iron FC300(JIS) / GG30(DIN)
Heat treated (Normalized)
Alignment Bushing: SUJ2(JIS) / 100Cr6(DIN) heat treated.
Threaded Insert: S45C (JIS)/ CK45 (DIN), heat treated.
MTP hole spacing: 50 ± 0.02
- Application: Vertical Machining Center.
- Features: Alignment bushing & thread insert at every hole location, easily adapts to standardized jig components.

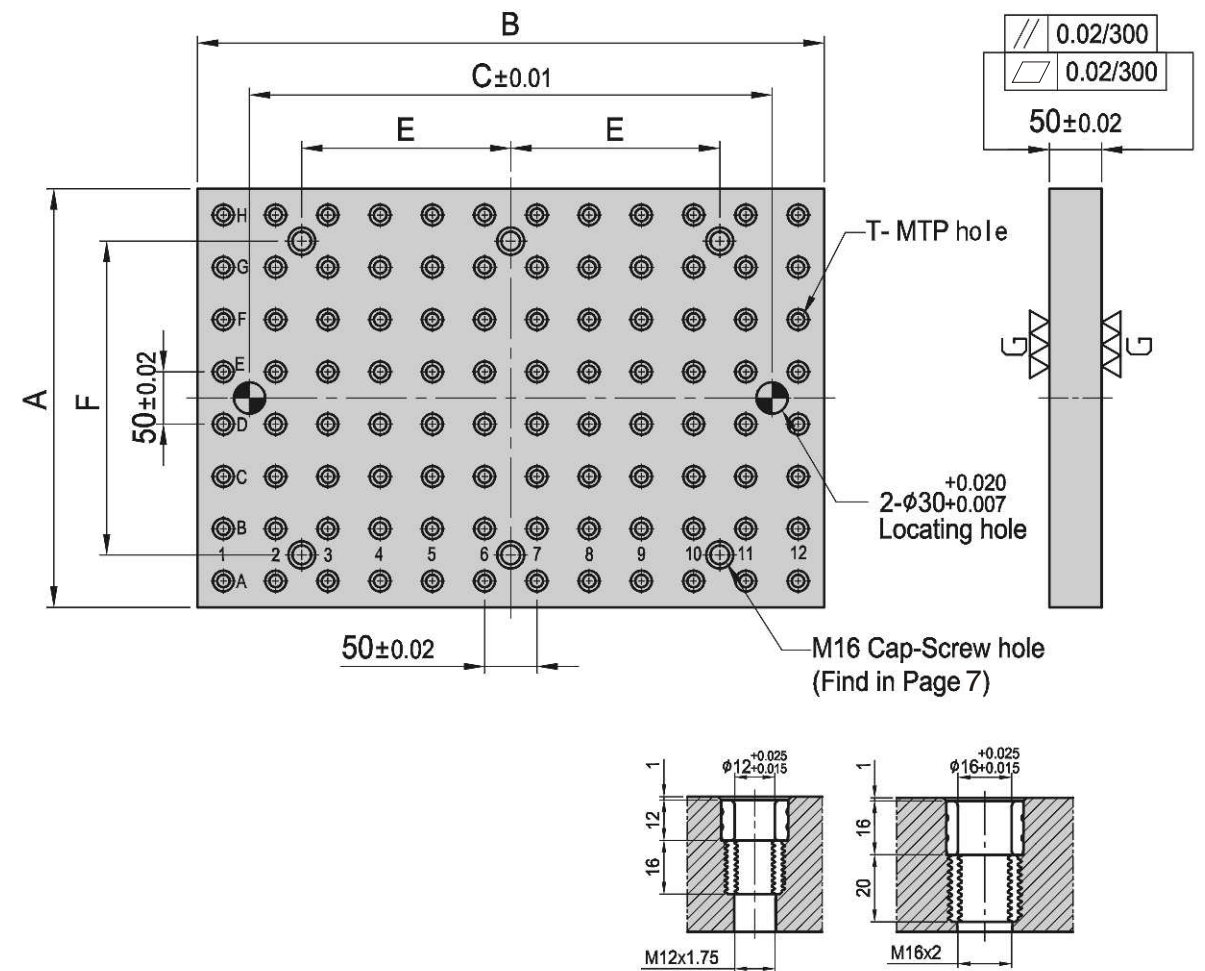
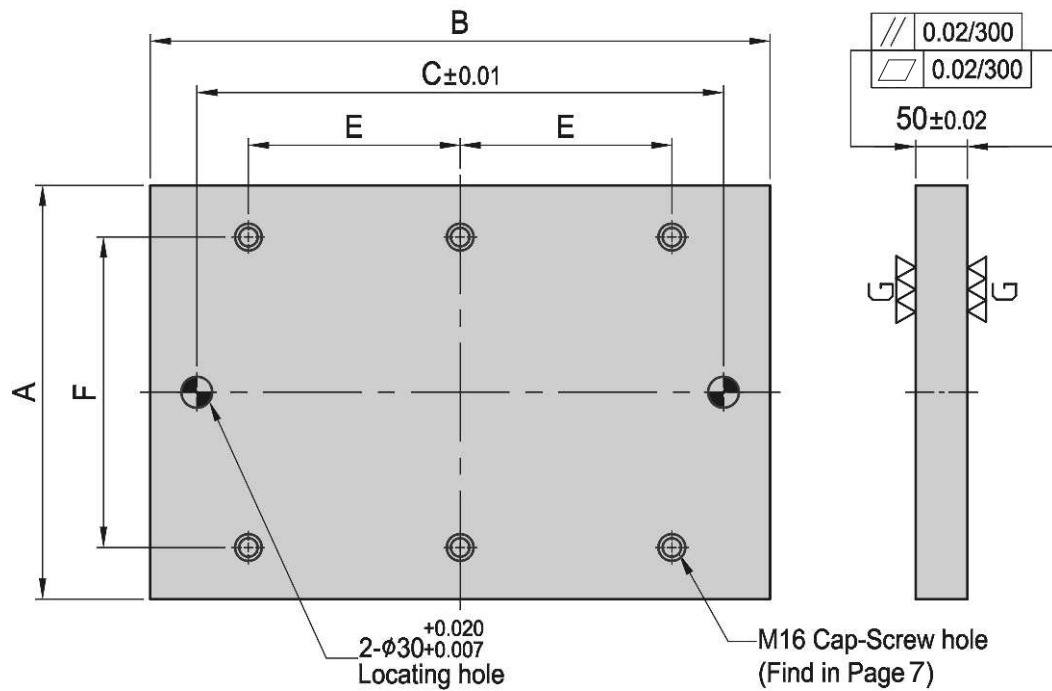


Figure T

MODEL NO.	A	B	C	E	F	kg
BP01-50400-0600	400	600	-	-	-	93
BP01-50500-0600	500	600	-	-	-	116
BP01-50600-0600	600	600	-	-	-	140
BP01-50400-0800	400	800	-	-	-	124
BP01-50450-0900	450	900	-	-	-	158
BP01-50500-1000	500	1000	-	-	-	195
BP01-50600-1200	600	1200	-	-	-	265

*Special Design Welcome !

MODEL NO.	A	B	C	E	F	T	MTP	kg
BP02-50400-0600-12	400	600	-	-	φ 12	M12	96	90
BP02-50500-0600-12	500	600	-	-	φ 12	M12	120	112
BP02-50600-0600-12	600	600	-	-	φ 12	M12	144	134
BP02-50400-0800-12	400	800	-	-	φ 12	M12	128	119
BP02-50450-0900-12	450	900	-	-	φ 12	M12	158	151
BP02-50500-1000-12	500	1000	-	-	φ 12	M12	200	173
BP02-50600-1200-12	600	1200	-	-	φ 12	M12	288	256

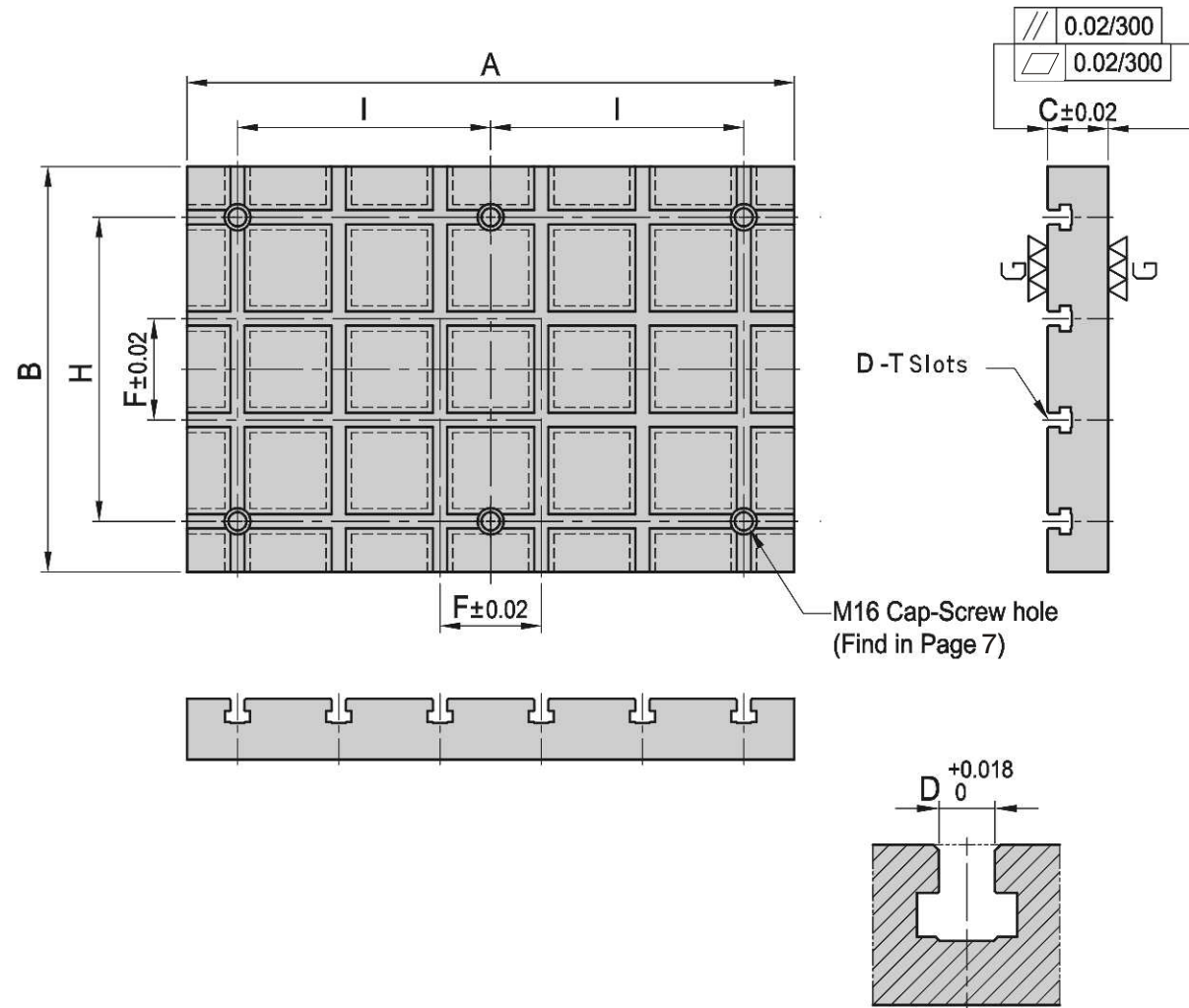
*Special Design Welcome !

MODEL NO.	A	B	C	E	F	T	MTP	kg
BP02-50400-0600-16	400	600	-	-	φ 16	M16	96	87
BP02-50500-0600-16	500	600	-	-	φ 16	M16	120	108
BP02-50600-0600-16	600	600	-	-	φ 16	M16	144	129
BP02-50400-0800-16	400	800	-	-	φ 16	M16	128	115
BP02-50450-0900-16	450	900	-	-	φ 16	M16	158	146
BP02-50500-1000-16	500	1000	-	-	φ 16	M16	200	171
BP02-50600-1200-16	600	1200	-	-	φ 16	M16	288	244

BP03

M/C BASE PLATE

- Material / Finish:
Material: Cast Iron FC300(JIS) / GG30(DIN)
Heat treated (Normalized)
- Application: Vertical Machining Center.
- Features: T-Slots running in 2 directions, easily adapts to standardized jig components.



M16 Cap-Screw hole
(Find in Page 7)

Figure D

MODEL NO.	A	B	C	D	F	H	I	kg
BP03-60400-0600-14	600	400	60	14	100	-	-	120
BP03-60500-0600-14	600	500	60	14	100	-	-	150
BP03-60600-0600-14	600	600	60	14	100	-	-	179
BP03-60400-0800-14	800	400	60	14	100	-	-	160
BP03-60450-0900-14	900	450	60	14	100	-	-	204
BP03-60500-1000-14	1000	500	60	14	100	-	-	248
BP03-60600-1200-14	1200	600	60	14	100	-	-	358

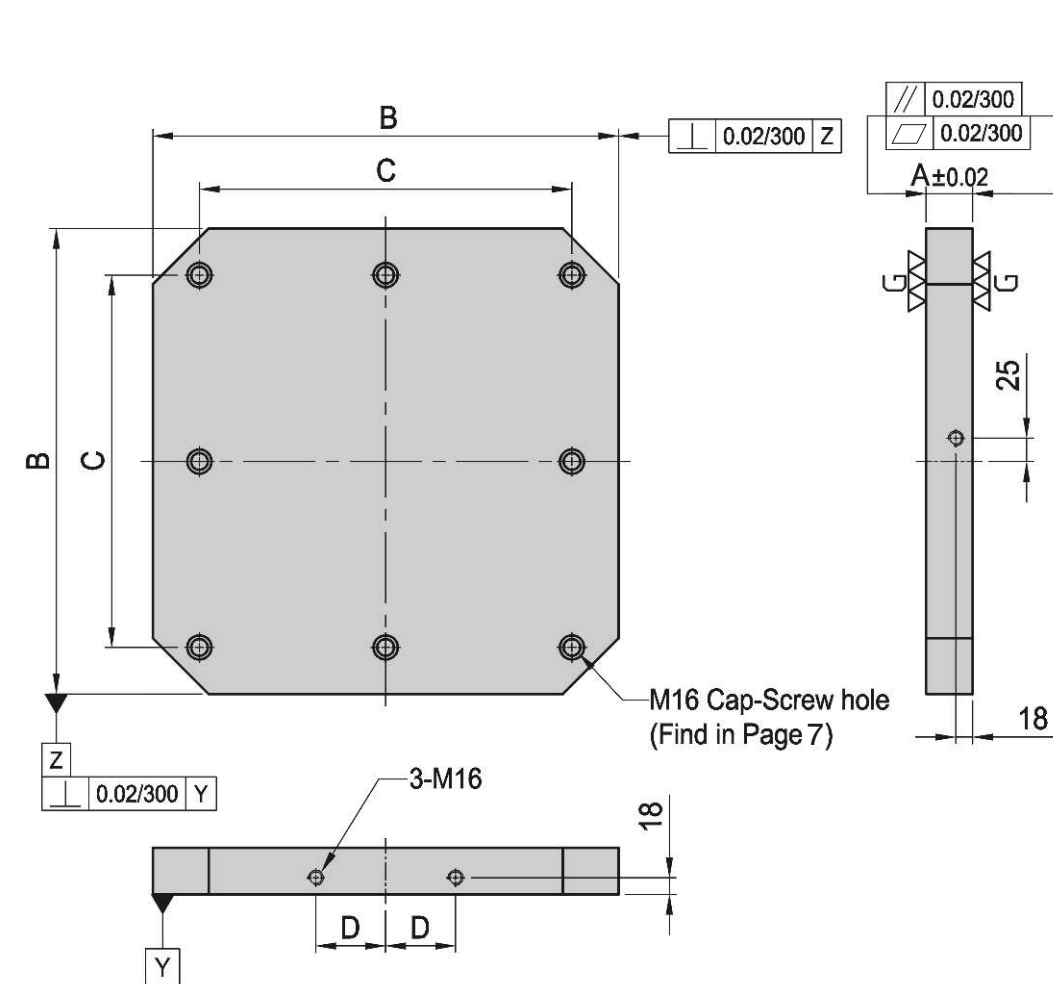
*Special Design Welcome !

MODEL NO.	A	B	C	D	F	H	I	kg
BP03-75400-0600-18	600	400	75	18	100	-	-	100
BP03-75500-0600-18	600	500	75	18	100	-	-	125
BP03-75600-0600-18	600	600	75	18	100	-	-	149
BP03-75400-0800-18	800	400	75	18	100	-	-	133
BP03-75450-0900-18	900	450	75	18	100	-	-	169
BP03-75500-1000-18	1000	500	75	18	100	-	-	207
BP03-75600-1200-18	1200	600	75	18	100	-	-	296

BP04

M/C BASE PLATE

- Material / Finish:
Material: Cast Iron FC300(JIS) / GG30(DIN)
Heat treated (Normalized)
- Application: Horizontal Machining Center.
- Features: Ready to accept a hole pattern for your special jig.



M16 Cap-Screw hole
(Find in Page 7)

*Special Design Welcome !

MODEL NO.	A	B	C	D	Mounting holes	kg
BP04-50400-0400	50	400	320	55	4	57
BP04-50500-0500	50	500	400	75	8	88
BP04-50630-0630	50	630	500	100	8	140
BP04-50800-0800	50	800	640	135	8	270

BP

BPA

BC

CP

SU

PT

SVF

ALV

OK-
VISE

OTHER

Column
for
Technical
Data

BP05

M/C BASE PLATE

- Material / Finish:
Material: Cast Iron FC300(JIS) / GG30(DIN)
Heat treated(Normalized)
Alignment Bushing: SUJ2(JIS) / 100Cr6(DIN), heat treated.
Threaded Insert: S45C(JIS) / CK45(DIN), heat treated.
MTP hole spacing: 50±0.02
- Application: Horizontal Machining Center.
- Features: Alignment bushing & thread insert at every hole location, easily adapts to standardized jig components.

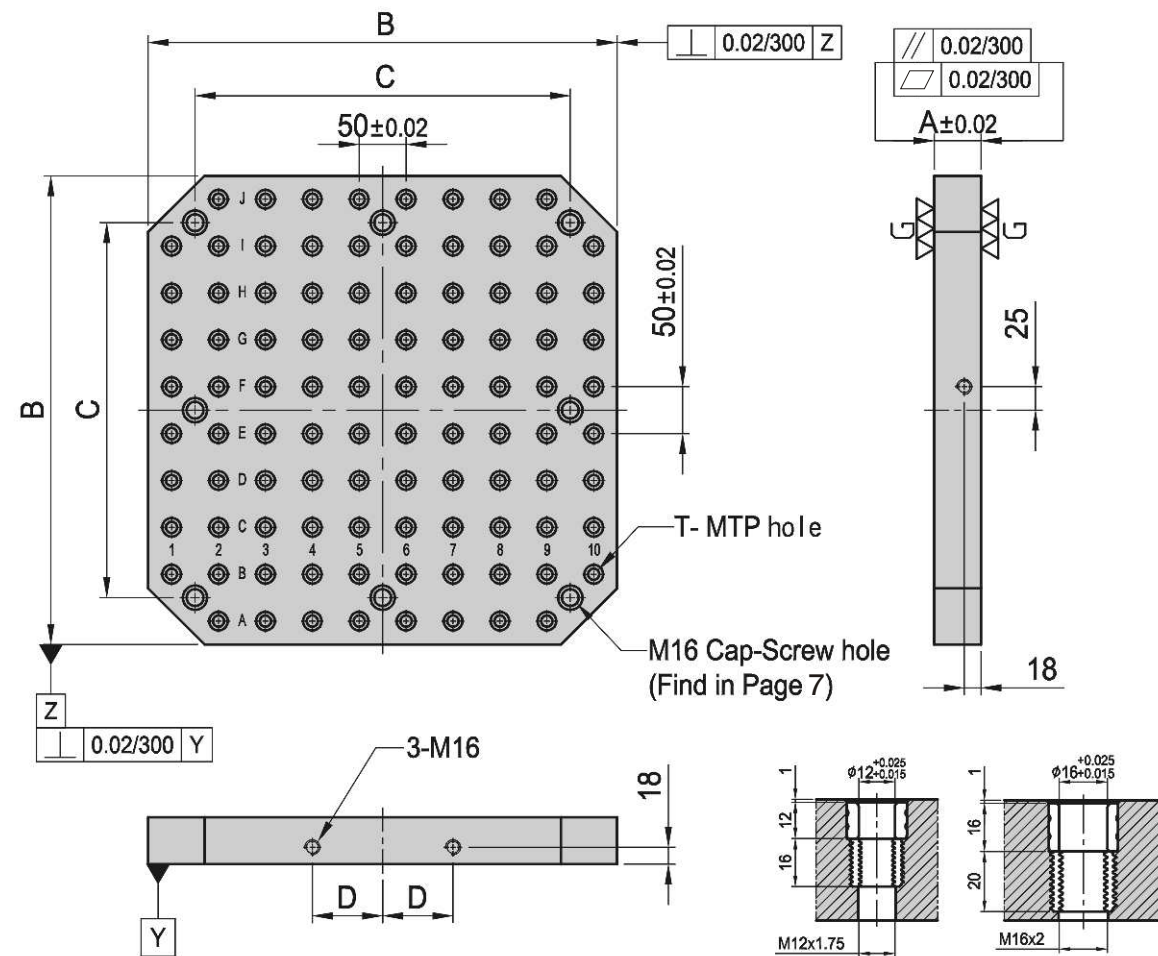


Figure T

MODEL NO.	A	B	C	D	T	MTP	Mounting holes	kg
BP05-50400-0400-12	50	400	320	55	φ 12	M12	59	4
BP05-50500-0500-12	50	500	400	75	φ 12	M12	93	8
BP05-50630-0630-12	50	630	500	100	φ 12	M12	139	8
BP05-50800-0800-12	50	800	640	135	φ 12	M12	237	8
BP05-50400-0400-16	50	400	320	55	φ 16	M16	59	4
BP05-50500-0500-16	50	500	400	75	φ 16	M16	93	8
BP05-50630-0630-16	50	630	500	100	φ 16	M16	139	8
BP05-50800-0800-16	50	800	640	135	φ 16	M16	237	8

*Special Design Welcome !

BP06

M/C BASE PLATE

- Material / Finish:
Material: Cast Iron FC300(JIS) / GG30(DIN)
Heat treated (Normalized)
- Application: Horizontal Machining Center.
- Features: T-Slots running in 2 directions, easily adapts to standardized jig components.

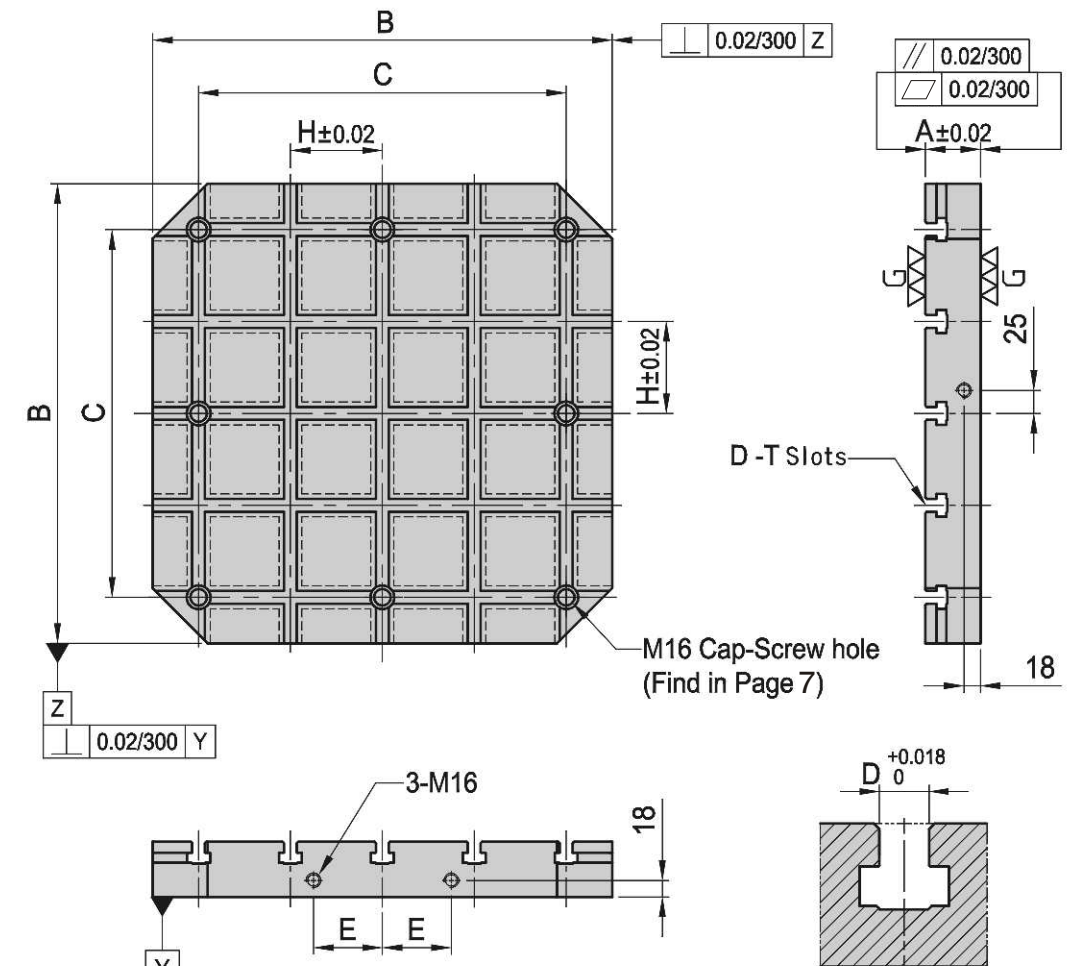


Figure D

MODEL NO.	A	B	C	D	E	H	kg
BP06-60400-0400-14	60	400	320	14	55	80	56
BP06-60500-0500-14	60	500	400	14	75	100	90
BP06-60630-0630-14	60	630	500	14	100	125	149
BP06-60800-0800-14	60	800	640	14	135	160	230
BP06-75400-0400-18	75	400	320	18	55	80	85
BP06-75500-0500-18	75	500	400	18	75	100	118
BP06-75630-0630-18	75	630	500	18	100	125	195
BP06-75800-0800-18	75	800	640	18	135	160	298

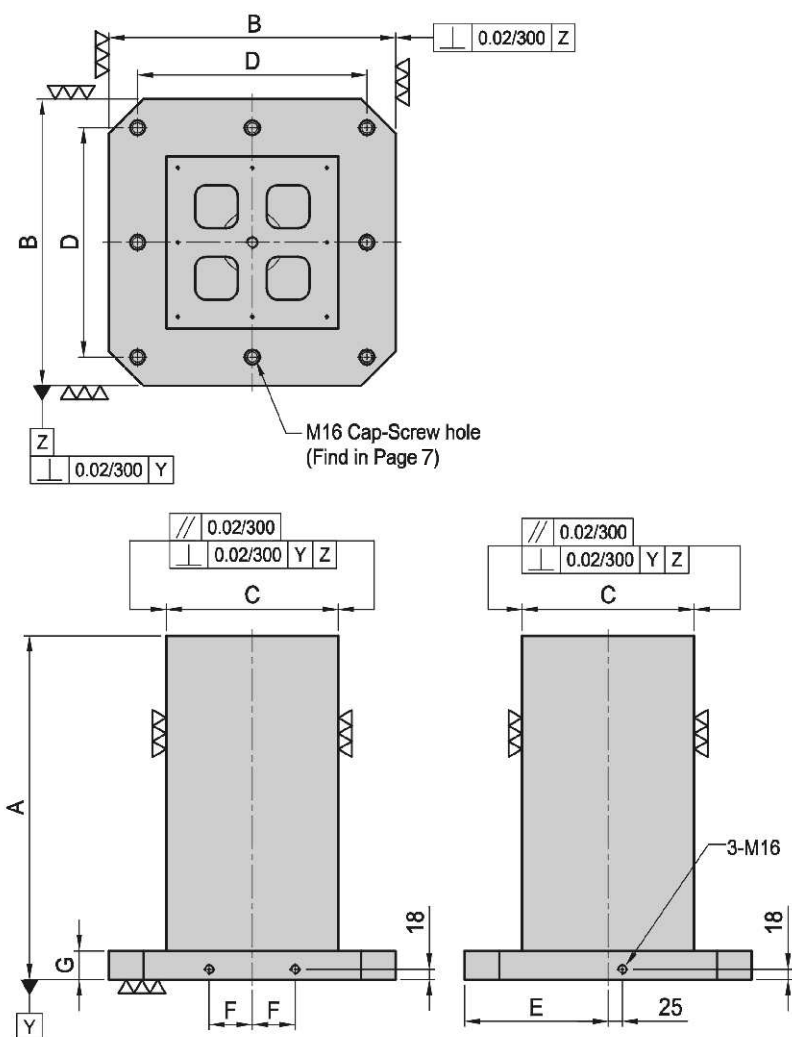
*Special Design Welcome !



BP07

SQUARE TOOLING COLUMN

- Material / Finish:
Material: Cast Iron FC300(JIS) / GG30(DIN)
Heat treated (Normalized)
- Application: Horizontal Machining Center.
- Features: Ready to accept a hole pattern for your special jig.
• Eye bolt & top cover included.



MODEL NO.	A	B	C	D	E	F	G	Mounting holes	kg
BP07-400400-0500	500	400	250	320	200	55	50	4	153
BP07-400400-0650	650								218
BP07-500500-0600	600	500	300	400	250	75	50	8	250
BP07-500500-0750	750								335
BP07-630630-0700	700	630	350	500	315	100	50	8	361
BP07-630630-0850	850								496
BP07-800800-0800	800	800	500	640	400	135	50	8	700
BP07-800800-1000	1000								859

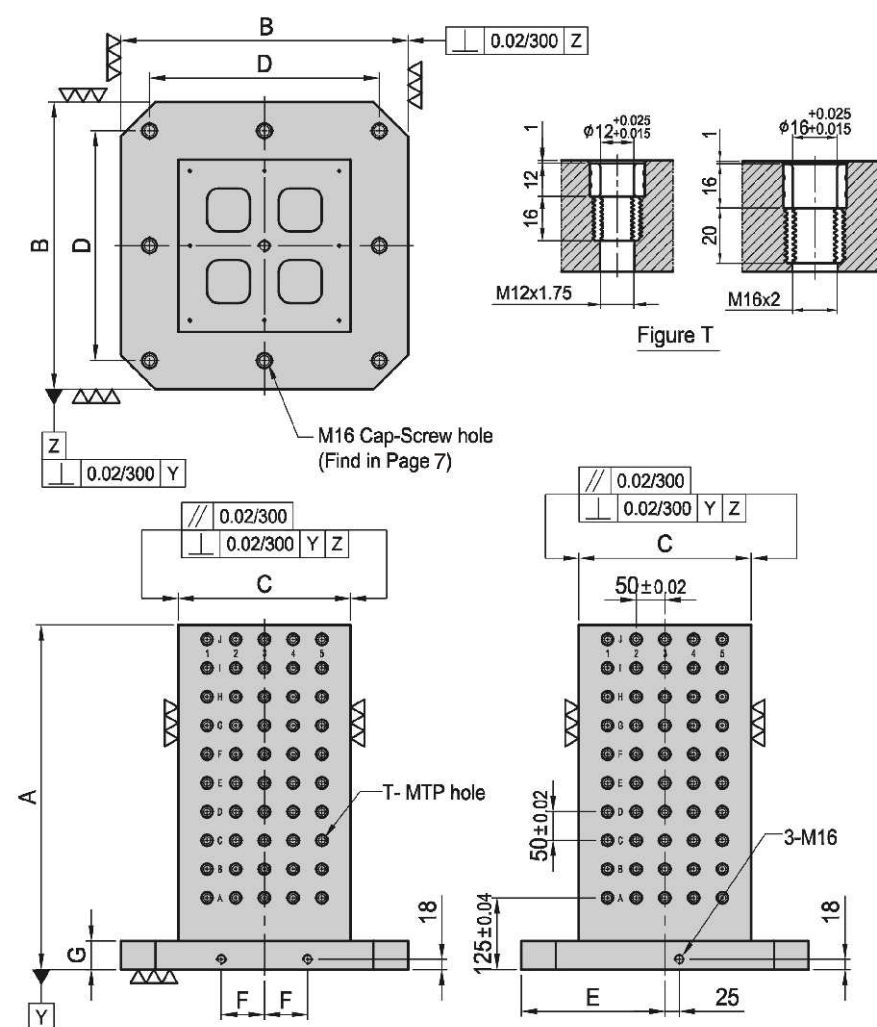
*Special Design Welcome !



BP08

SQUARE TOOLING COLUMN

- Material / Finish:
Material: Cast Iron FC300 (JIS) / GG30 (DIN)
Heat treated (Normalized)
Alignment bushing: SUJ2(JIS) / 100Cr6(DIN), heat treated
Threaded Insert: S45C(JIS) / CK45(DIN), heat treated
MTP hole spacing: 50±0.02
- Application: Horizontal Machining Center.
- Features: Alignment bushing & thread insert at every hole location, easily adapts to standardized jig components.
• Eye bolt & top cover included.



MODEL NO.	A	B	C	D	E	F	G	T	MTP	Mounting holes	kg	MODEL NO.	A	B	C	D	E	F	G	T	MTP	Mounting holes	kg		
BP08-400400-0500-12	500	400	250	320	200	55	50	φ12	M12	128	4	149	BP08-400400-0500-16	500	400	250	320	200	55	50	φ16	M16	128	4	148
BP08-400400-0650-12	650									176			218	BP08-400400-0650-16									650		
BP08-500500-0600-12	600	500	300	400	250	75	50	φ12	M12	200	8	243	BP08-500500-0600-16	600	500	300	400	250	75	50	φ16	M16	200	8	234
BP08-500500-0750-12	750									260			335	BP08-500500-0750-16									750		
BP08-630630-0700-12	700	630	350	500	315	100	50	φ12	M12	288	8	316	BP08-630630-0700-16	700	630	350	500	315	100	50	φ16	M16	288	8	340
BP08-630630-0850-12	850									360			496	BP08-630630-0850-16									850		
BP08-800800-0800-12	800	800	500	640	400	135	50	φ12	M12	504	8	563	BP08-800800-0800-16	800	800	500	640	400	135	50	φ16	M16	504	8	655
BP08-800800-1000-12	1000									648			859	BP08-800800-1000-16									1000		

*Special Design Welcome !

BP

BPA

BC

CP

SU

PT

SVF

ALV

OK-VISE

OTHER

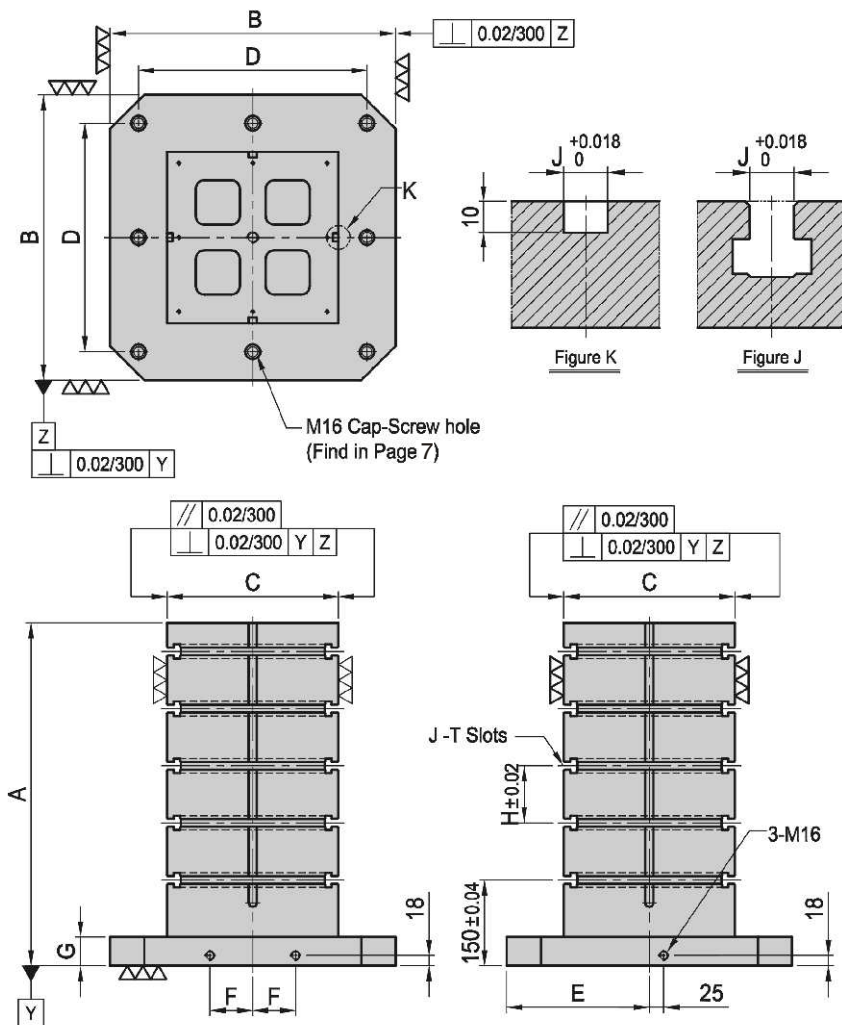
Column for Technical Data



BP09

SQUARE TOOLING COLUMN

- Material / Finish:
Material: Cast Iron FC300(JIS) / GG30(DIN)
Heat treated (Normalized)
- Application: Horizontal Machining Center.
- Features: T-Slots running horizontally, key-way running vertically, easily adapts to standardized jig components.
- Eye bolt & top cover included.



MODEL NO.	A	B	C	D	E	F	G	H	J	Mounting holes	kg
BP09-400400-0500-14	500	400	250	320	200	55	50	100	14	4	149
BP09-400400-0650-14	650										232
BP09-500500-0600-14	600	500	300	400	250	75	50	100	14	8	243
BP09-500500-0750-14	750										351
BP09-630630-0700-14	700	630	350	500	315	100	50	125	14	8	316
BP09-630630-0850-14	850										505
BP09-800800-0800-14	800	800	500	640	400	135	50	150	14	8	563
BP09-800800-1000-14	1000										877

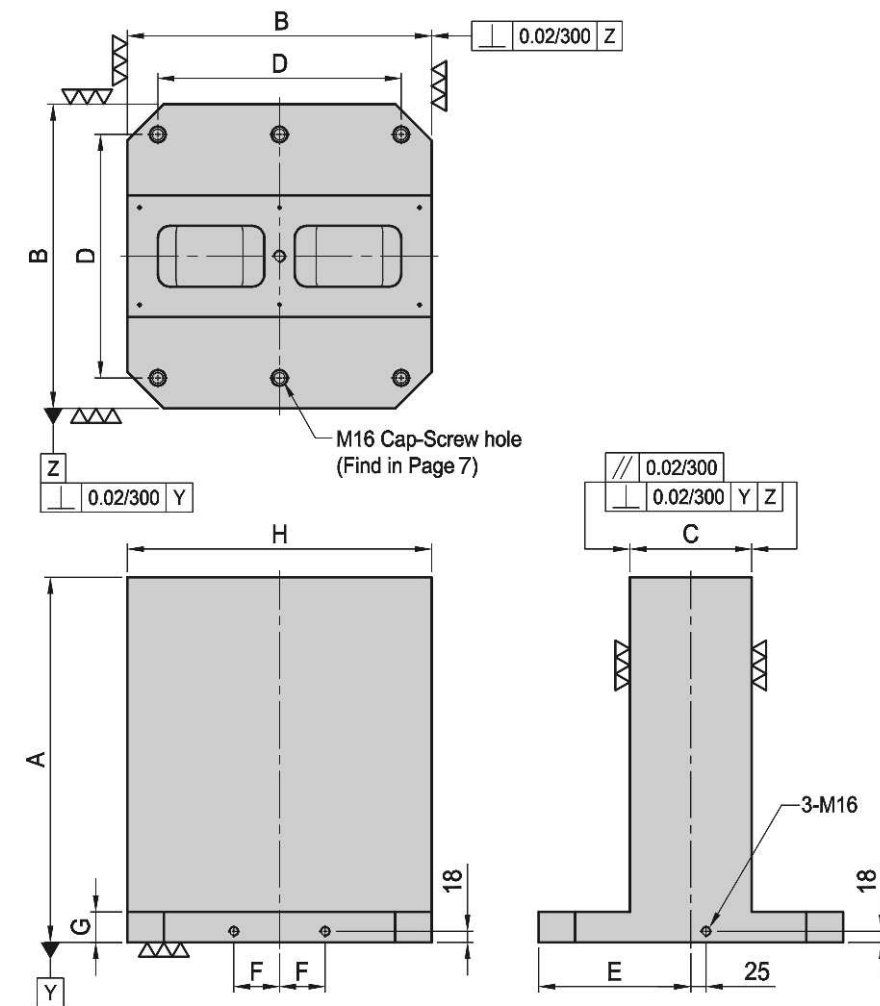
*Special Design Welcome !



BP10

DOUBLE SIDED TOOLING COLUMN

- Material / Finish:
Material: Cast Iron FC300(JIS) / GG30(DIN)
Heat treated (Normalized)
- Application: Horizontal Machining Center.
- Features: Ready to accept a hole pattern for your special jig.
- Eye bolt & top cover included.



MODEL NO.	A	B	C	D	E	F	G	H	Mounting holes	kg
BP10-400400-0500	500	400	150	320	200	55	50	400	4	170
BP10-400400-0650	650									236
BP10-500500-0600	600	500	200	400	250	75	50	500	6	265
BP10-500500-0750	750									372
BP10-630630-0700	700	630	250	500	315	100	50	630	6	440
BP10-630630-0850	850									556
BP10-800800-0800	800	800	300	640	400	135	50	800	6	700
BP10-800800-1000	1000									877

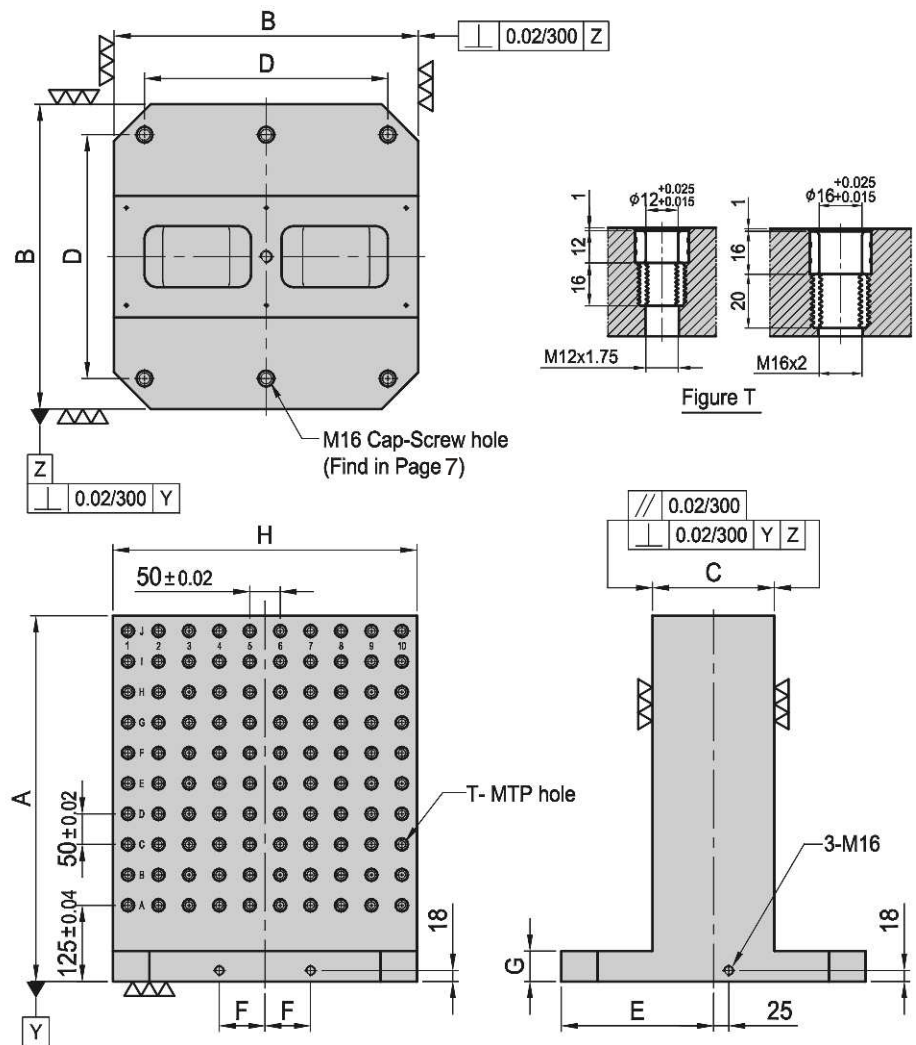
*Special Design Welcome !



BP11

DOUBLE SIDED TOOLING COLUMN

- Material / Finish:
Material: Cast Iron FC300(JIS) / GG30(DIN)
Heat treated (Normalized)
Alignment Bushing: SUJ2(JIS) / 100Cr6 (DIN), heat treated
Threaded Insert: S45C(JIS) / CK45(DIN), heat treated
MTP hole spacing: 50 ± 0.02
- Application: Horizontal Machining Center.
- Features: Alignment bushing & thread insert at every hole location, easily adapts to standardized jig components.
- Eye bolt & top cover included.



MODEL NO.	A	B	C	D	E	F	G	H	T	MTP	Mount-ing holes	kg
BP11-400400-0500-12	500										128	160
BP11-400400-0650-12	650	400	150	320	200	55	50	400	φ12	M12	176	236
BP11-500500-0600-12	600										200	250
BP11-500500-0750-12	750	500	200	400	250	75	50	500	φ12	M12	260	372
BP11-630630-0700-12	700	630	250	500	315	100	50	630	φ12	M12	288	475
BP11-630630-0850-12	850	630	250	500	315	100	50	630	φ12	M12	360	556
BP11-800800-0800-12	800										420	700
BP11-800800-1000-12	1000	800	300	640	400	135	50	800	φ12	M12	540	877

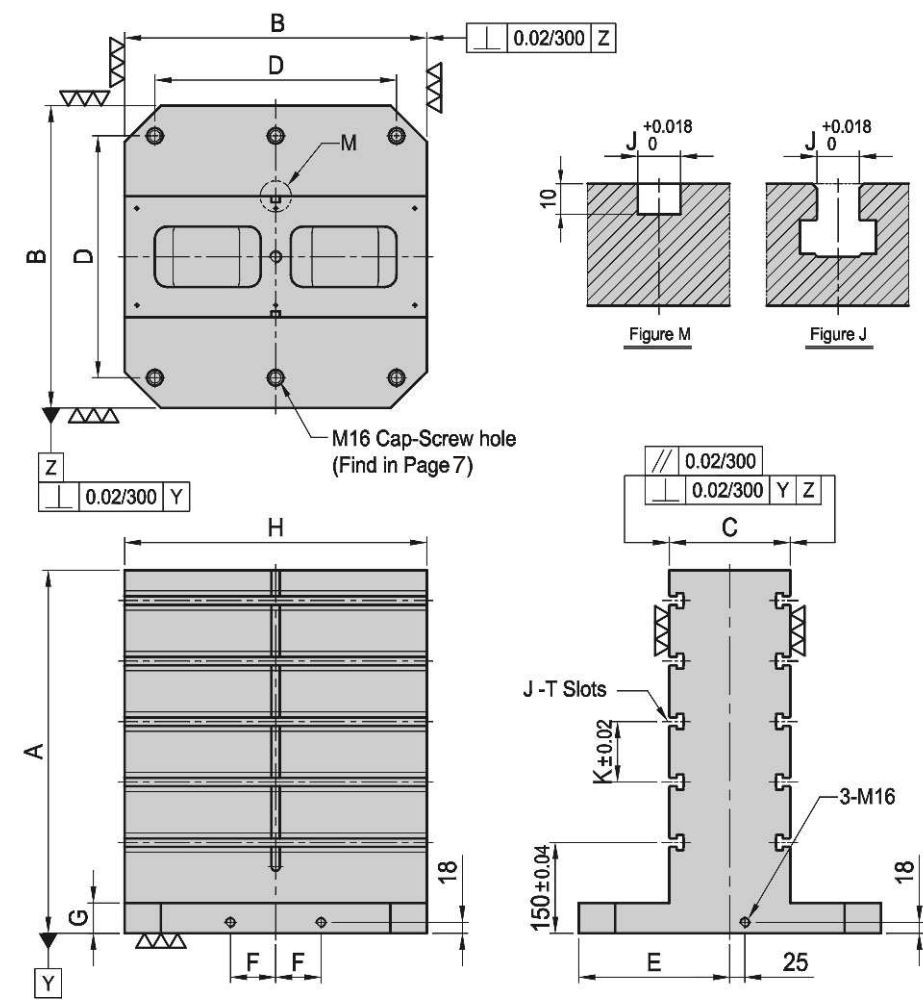
*Special Design Welcome !



BP12

DOUBLE SIDED TOOLING COLUMN

- Material / Finish:
Material: Cast Iron FC300(JIS) / GG30(DIN)
Heat treated (Normalized)
- Application: Horizontal Machining Center.
- Features: T-Slots running horizontally, key-way running vertically, easily adapts to standardized jig components.
- Eye bolt & top cover included.



MODEL NO.	A	B	C	D	E	F	G	H	J	K	Mount-ing holes	kg
BP12-400400-0500-14	500										4	165
BP12-400400-0650-14	650	400	150	320	200	55	50	400	14	100	4	252
BP12-500500-0600-14	600										6	280
BP12-500500-0750-14	750	500	200	400	250	75	50	500	14	100	6	391
BP12-630630-0700-14	700	630	250	500	315	100	50	630	14	125	6	455
BP12-630630-0850-14	850	630	250	500	315	100	50	630	14	125	6	583
BP12-800800-0800-14	800										6	700
BP12-800800-1000-14	1000	800	300	640	400	135	50	800	14	150	6	895

*Special Design Welcome !



BP13

MODULAR TOOLING COLUMN

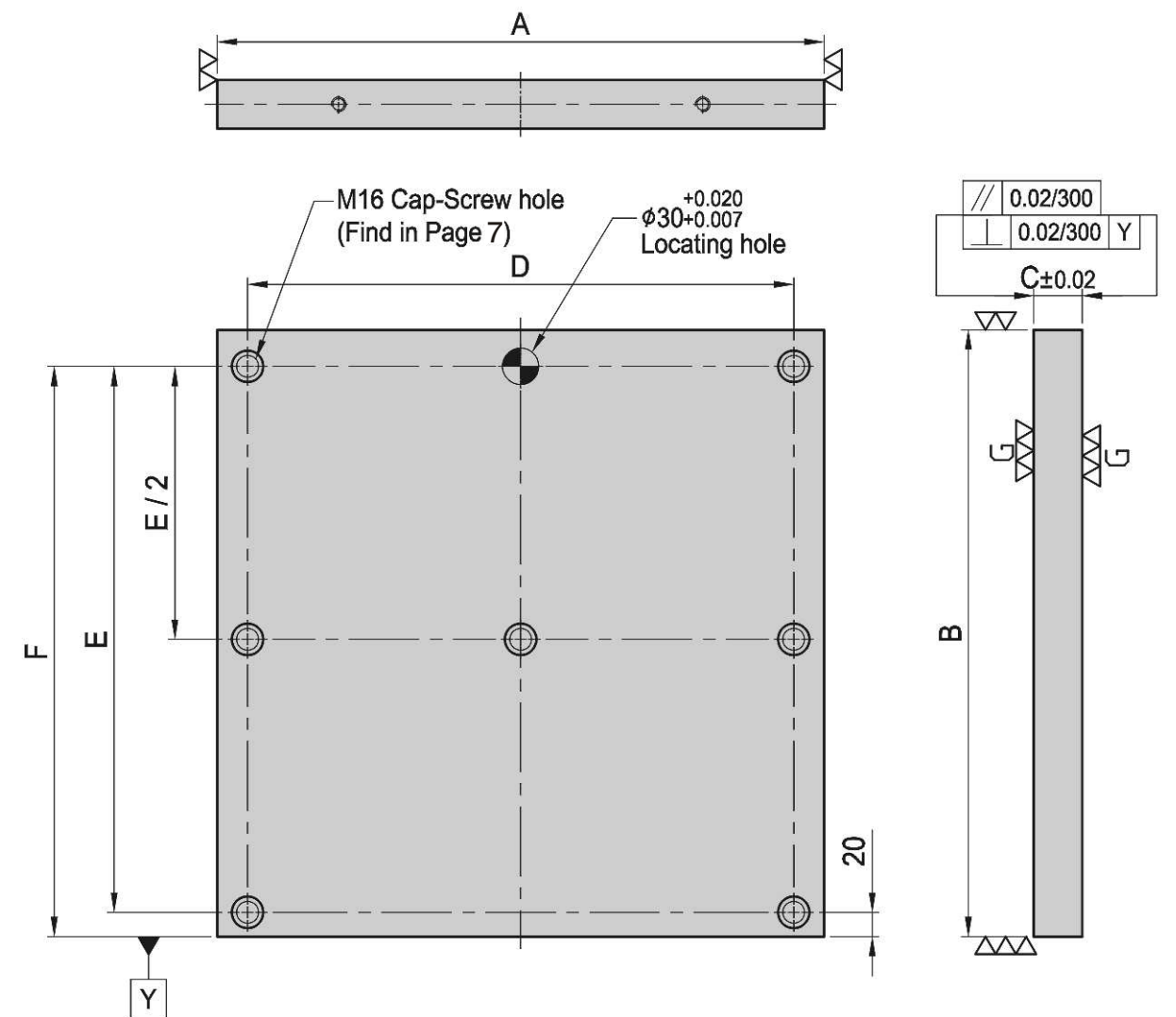
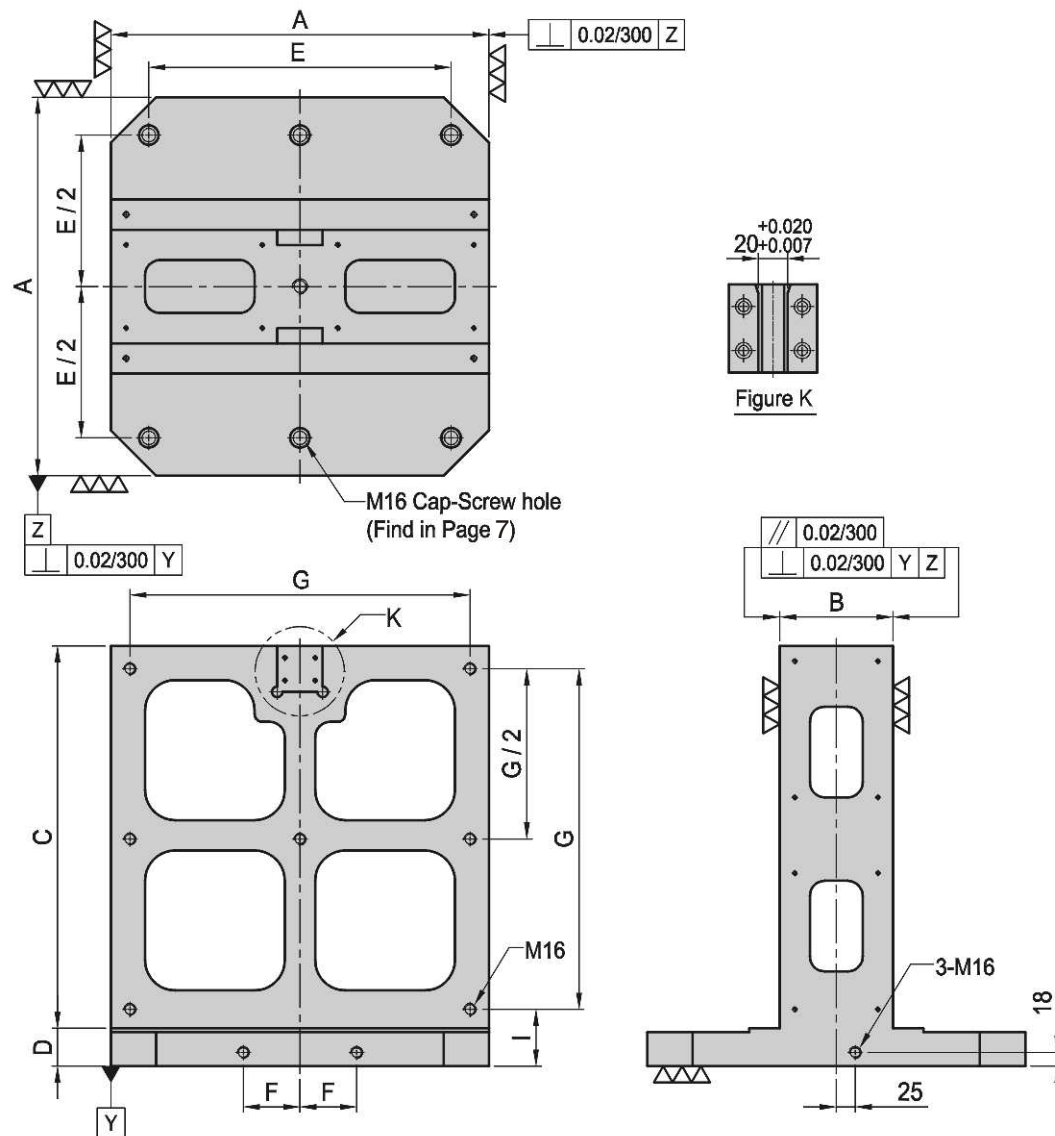
- Material / Finish:
Material: Cast Iron FC300(JIS) / GG30(DIN)
Heat treated (Normalized)
- Application: Horizontal Machining Center.
- Features: Modular quick-change system, simple 3 point mounting, use with BP14 & BP15 subplates.
- Eye bolt, top cover & side covers included.



BP14

SUB-PLATE

- Material / Finish:
Material: Cast Iron FC300(JIS) / GG30(DIN)
Heat treated (Normalized)
- Application: Modular quick change subplate, use with BP13.
- Features: Ready to accept a hole pattern for your special jig.



MODEL NO.	A	B	C	D	E	F	G	I	Mounting holes	kg
BP13-400400-0450	400	130	400	50	320	55	350	70	4	121
BP13-500500-0555	500	150	500	55	400	75	450	75	6	215
BP13-630630-0690	630	220	630	60	500	100	580	80	6	340
BP13-800800-0860	800	250	800	60	640	135	750	80	6	500

*Special Design Welcome !

MODEL NO.	A	B	C	D	E	F	Mounting holes	kg
BP14-40400-0400	400	400	40	350	350	370	5	50
BP14-40500-0500	500	500	40	450	450	470	7	70
BP14-40630-0630	630	630	40	580	580	600	7	114
BP14-50800-0800	800	800	50	750	750	770	7	251

*Special Design Welcome !

BP

BPA

BC

CP

SU

PT

SVF

ALV

OK-
VISE

OTHER

Column
for
Technical
Data



BP15

SUB-PLATE

- Material / Finish:
Material: Cast Iron FC300(JIS) / GG30(DIN)
Heat treated (Normalized)
Alignment Bushing: SUJ2(JIS) / 100Cr6 (DIN), heat treated
Threaded Insert: S45C(JIS) / CK45(DIN), heat treated
MTP hole spacing: 50±0.02
- Application: Modular quick change subplate, use with BP13.
- Features: Alignment bushing & thread insert at every hole location, easily adapts to standardized jig components.



BP16

ROUND BASE PLATE

- Material / Finish:
Material: Cast Iron FC300(JIS) / GG30(DIN)
Heat treated (Normalized)
- Application: NC Rotary Table or Indexer.
- Features: Ready to accept a hole pattern for your special jig.

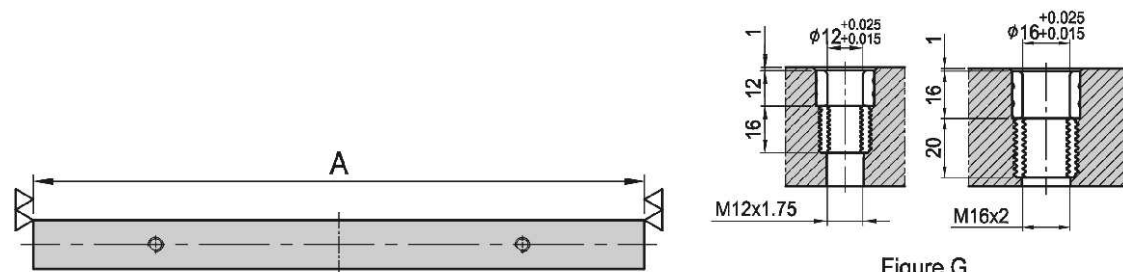
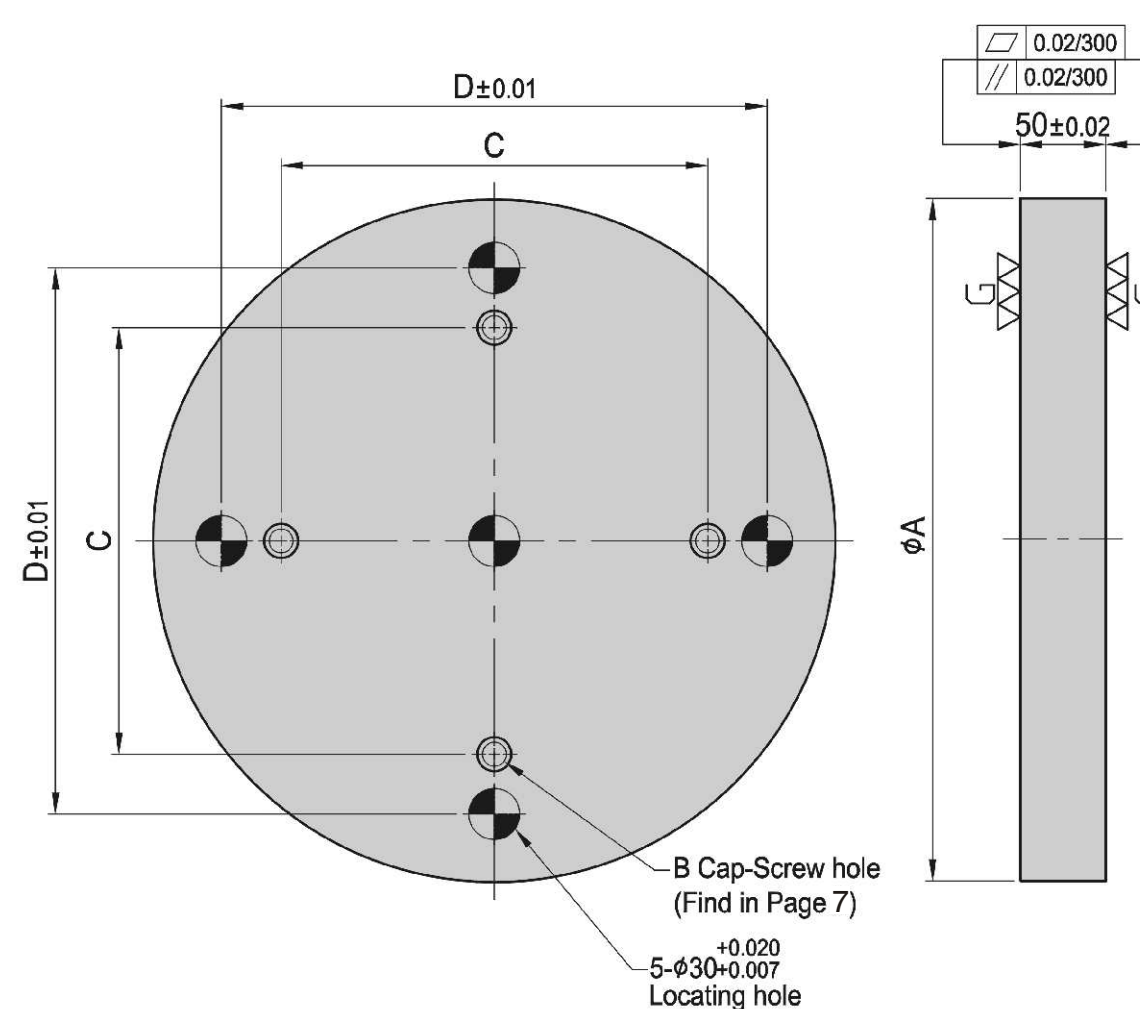
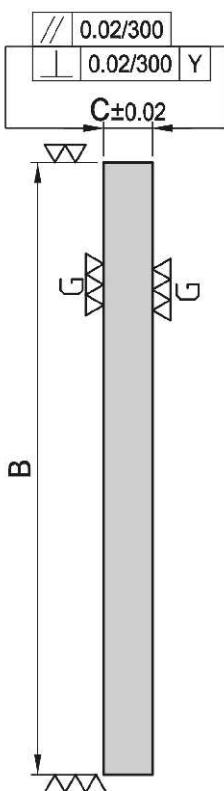
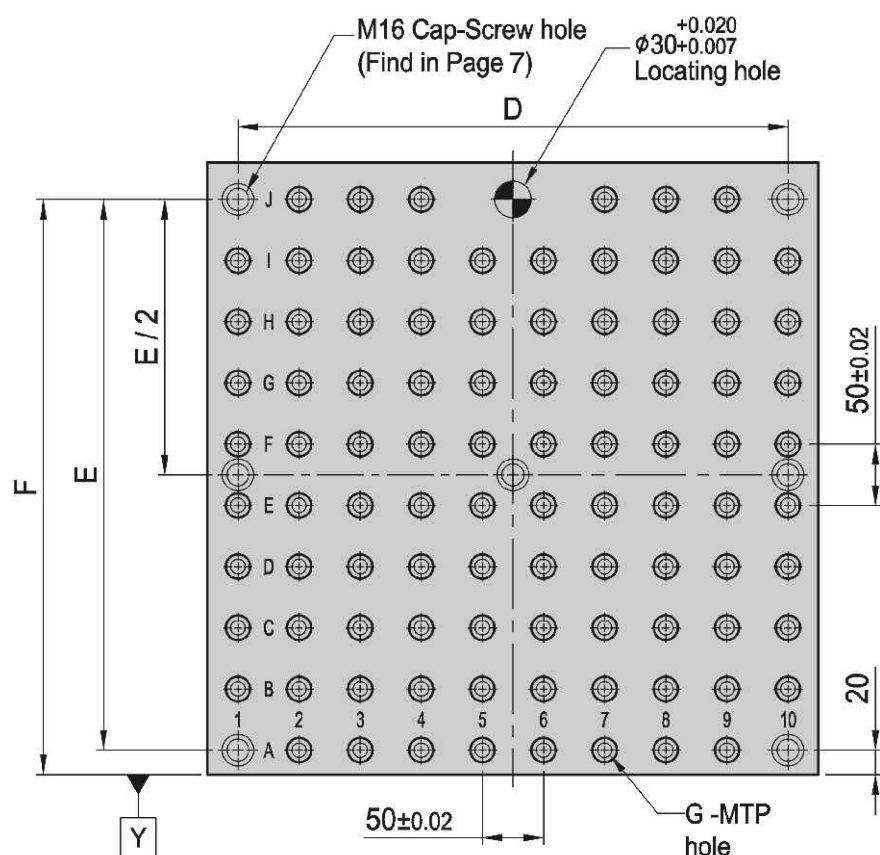


Figure G



MODEL NO.	A	B	C	D	E	F	G	MTP	Mount-ing holes	kg	
BP15-40400-0400-12	400	400	40	350	350	370	φ12	M12	58	5	42
BP15-40500-0500-12	500	500	40	450	450	470	φ12	M12	94	7	75
BP15-40630-0630-12	630	630	40	580	580	600	φ12	M12	138	7	108
BP15-50800-0800-12	800	800	50	750	750	770	φ12	M12	250	7	240

MODEL NO.	A	B	C	D	E	F	G	MTP	Mount-ing holes	kg	
BP15-40400-0400-16	400	400	40	350	350	370	φ16	M16	58	5	37
BP15-40500-0500-16	500	500	40	450	450	470	φ16	M16	90	7	73
BP15-40630-0630-16	630	630	40	580	580	600	φ16	M16	138	7	118
BP15-50800-0800-16	800	800	50	750	750	770	φ16	M16	246	7	235

MODEL NO.	A	B	C	D	kg
BP16-50-0300	300	M12	150	220	25
BP16-50-0400	400	M12	250	320	40
BP16-50-0500	500	M16	300	400	65
BP16-50-0600	600	M16	400	500	95

*Special Design Welcome !

*Special Design Welcome !

BP

BPA

BC

CP

SU

PT

SVF

ALV

OK-
VISE

OTHER

Column
for
Technical
Data

BP17

ROUND BASE PLATE



- Material / Finish:
Material: Cast Iron FC300(JIS) / GG30(DIN)
Heat treated (Normalized)
Alignment Bushing: SUJ2(JIS) / 100Cr6(DIN), heat treated
Threaded Insert: S45C(JIS) / CK45(DIN), heat treated
MTP hole spacing: 50 ± 0.02
- Application: NC Rotary Table or Indexer.
- Features: Alignment bushing & thread insert at every hole location, easily adapts to standardized jig components.

BP18

ROUND BASE PLATE



- Material / Finish:
Material: Cast Iron FC300(JIS) / GG30(DIN)
Heat treated (Normalized)
- Application: NC Rotary Table or Indexer.
- Features: T-Slots running in 2 directions, easily adapts to standardized jig components.

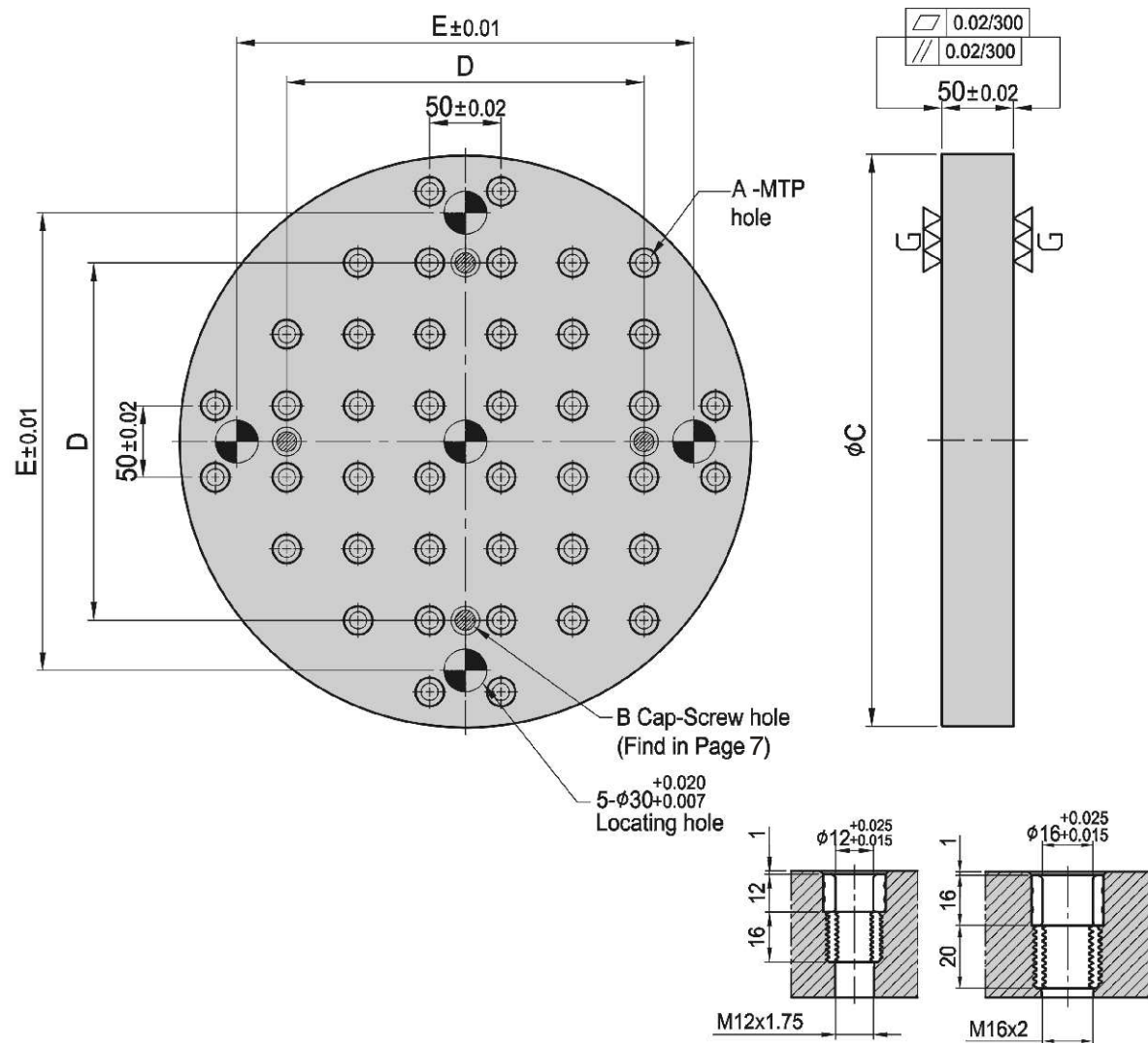


Figure A

MODEL NO.	A	B	C	D	E	MTP	kg
BP17-50-0300-12	φ 12	M12	M12	300	150	24	23
BP17-50-0400-12	φ 12	M12	M12	400	250	44	42
BP17-50-0500-12	φ 12	M12	M16	500	300	68	80
BP17-50-0600-12	φ 12	M12	M16	600	400	96	98
BP17-50-0500-16	φ 16	M16	M16	500	300	68	78
BP17-50-0600-16	φ 16	M16	M16	600	400	96	95

*Special Design Welcome !

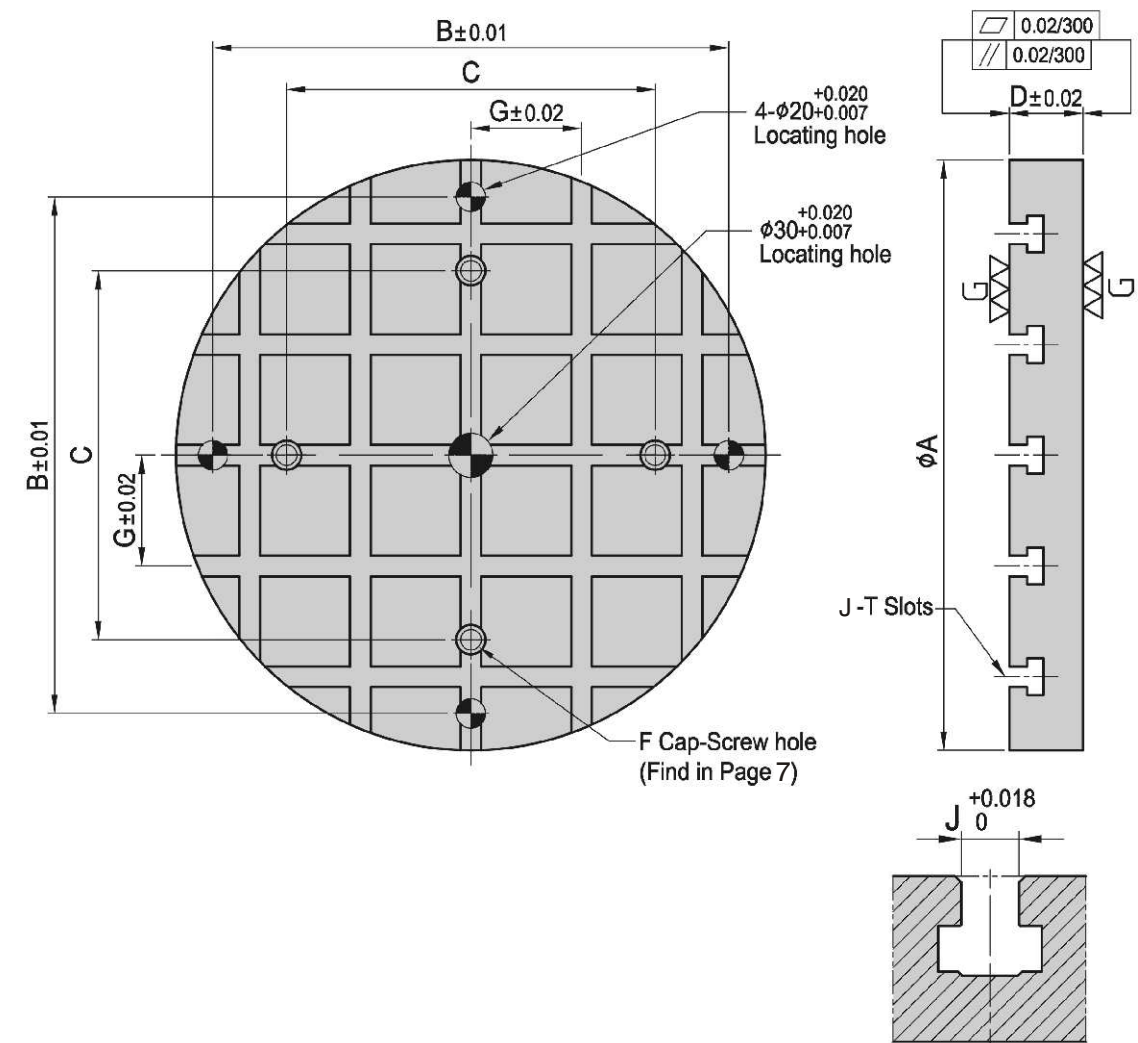


Figure J

MODEL NO.	A	B	C	D	F	G	J	kg
BP18-50-0300-14	300	250	150	50	M12	75	14	22
BP18-50-0400-14	400	350	250	50	M12	75	14	36
BP18-65-0500-18	500	450	300	65	M16	100	18	76
BP18-65-0600-18	600	550	400	65	M16	100	18	102

*Special Design Welcome !

BP

BPA

BC

CP

SU

PT

SVF

ALV

OK-
VISE

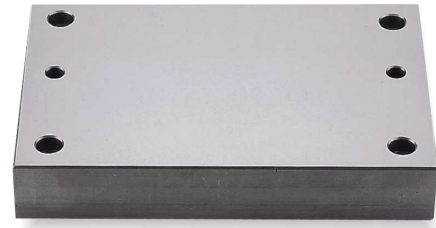
OTHER

Column
for
Technical
Data

BP19

SUB-PLATE

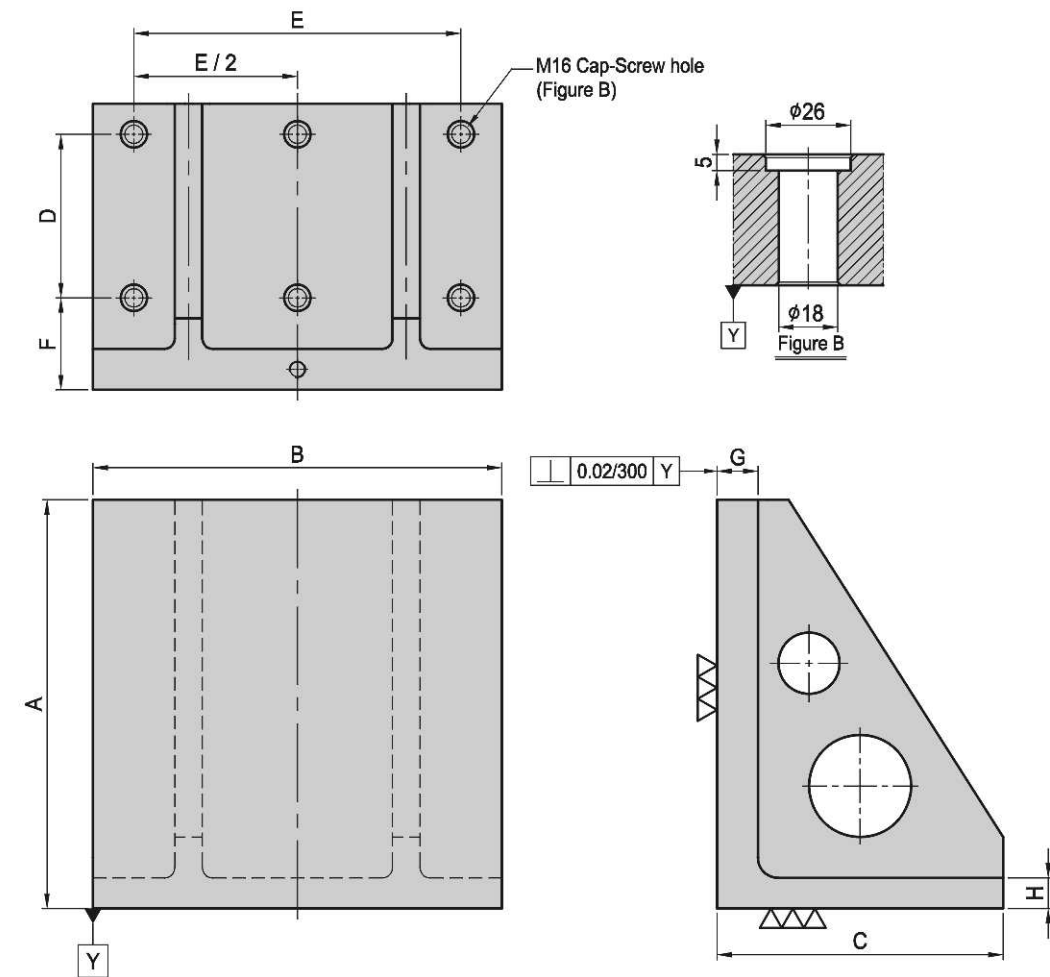
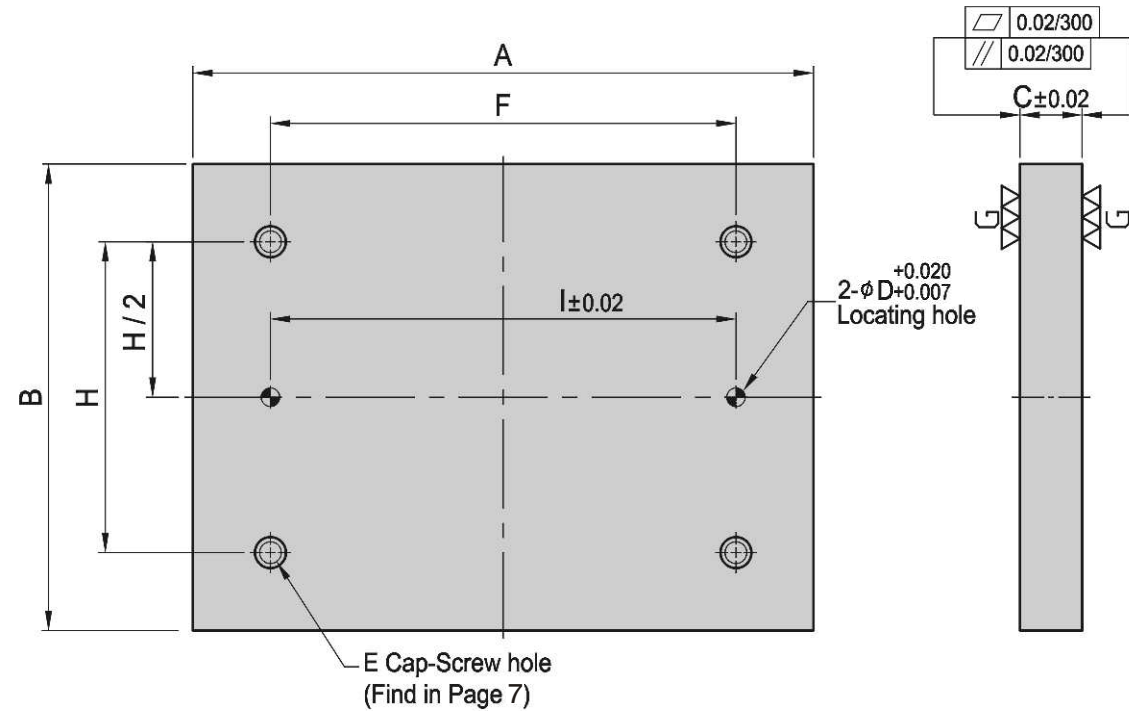
- Material / Finish:
Material: S45C(JIS) / CK45(DIN)
- Application: Multipurpose subplate.
- Features: Ready to accept a hole pattern for your special jig.



BP20

M/C ANGLE PLATE

- Material / Finish:
Material: Cast Iron FC300(JIS) / GG30(DIN)
Heat treated (Normalized)
- Application: HMC / VMC
- Features: Ready to accept a hole pattern for your special jig.



MODEL NO.	A	B	C	D	E	F	H	I	kg
BP19-30150-0200-12	200	150	30	12	M12	100	100	100	8.0
BP19-30150-0300-12	300					200		11.0	
BP19-30200-0200-12	200	200	30	12	M12	100	100	100	9.5
BP19-30200-0300-12	300					200		14.5	
BP19-30300-0300-12	300	300	30	12	M12	200	200	200	21.5
BP19-40300-0400-12	400					300		38.0	
BP19-40400-0400-12	400	400	40	12	M12	300	300	300	51.0
BP19-40400-0500-12	500					400		63.0	

MODEL NO.	A	B	C	D	E	F	H	I	kg
BP19-30150-0200-16	200	150	30	16	M16	100	100	100	8.0
BP19-30150-0300-16	300					200		11.0	
BP19-30200-0200-16	200	200	30	16	M16	100	100	100	9.5
BP19-30200-0300-16	300					200		14.5	
BP19-30300-0300-16	300	300	30	16	M16	200	200	200	21.5
BP19-40300-0400-16	400					300		38.0	
BP19-40400-0400-16	400	400	40	16	M16	300	300	300	51.0
BP19-40400-0500-16	500					400		63.0	

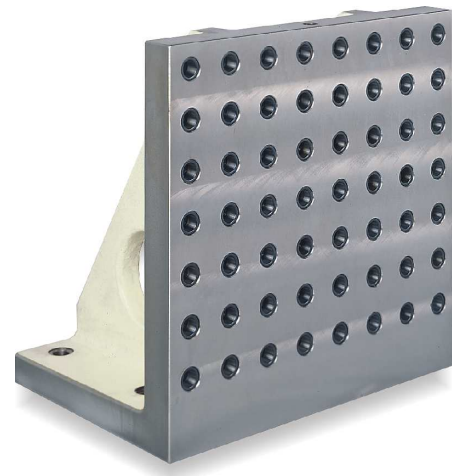
MODEL NO.	A	B	C	D	E	F	G	H	kg
BP20-220300-0300	300	300	220	100	250	90	40	30	52
BP20-280400-0400	400	400	280	160	320	90	40	30	90
BP20-340500-0500	500	500	340	200	400	90	50	35	175
BP20-435630-0630	630	630	435	250	500	100	50	40	305
BP20-525800-0800	800	800	525	320	640	115	50	45	480

*Special Design Welcome !

*Special Design Welcome !

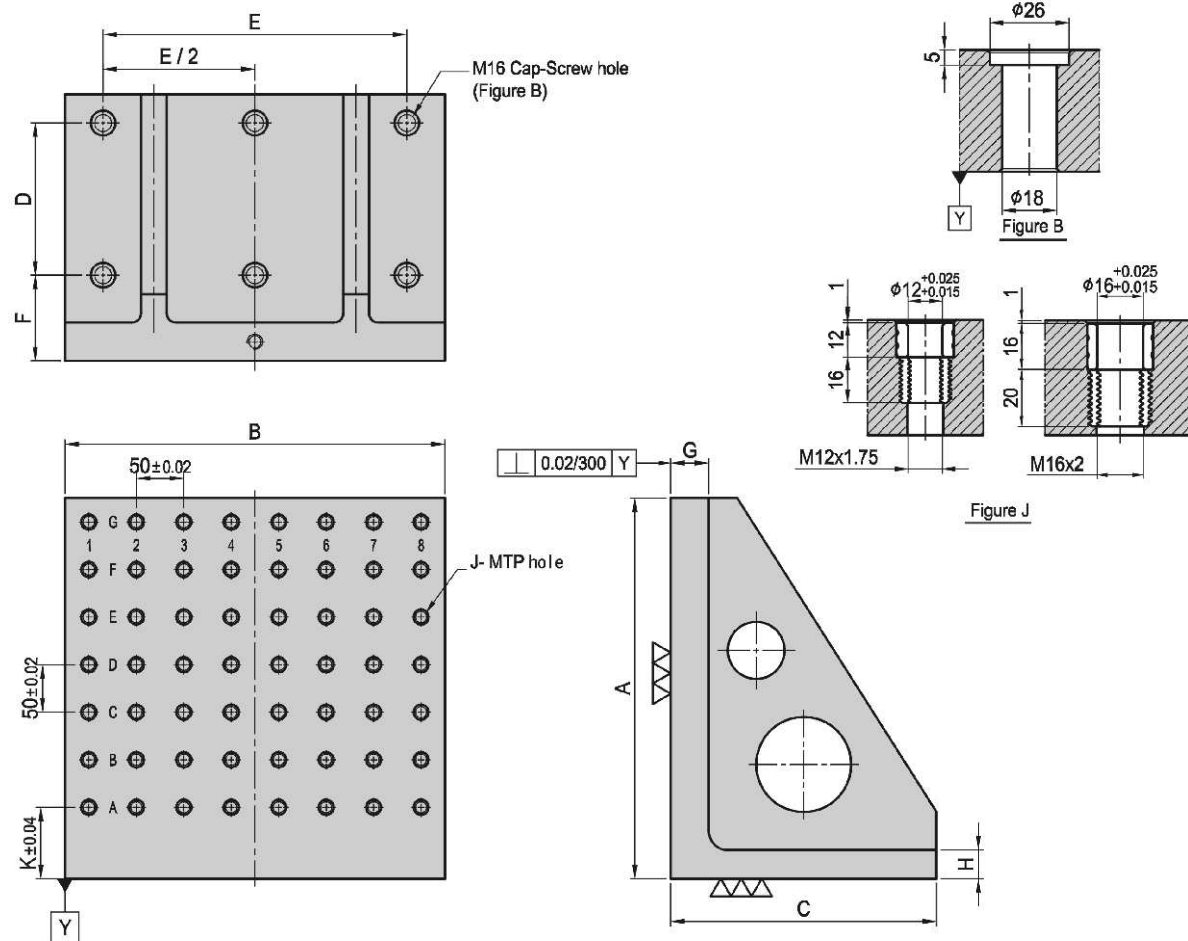
- BP
- BPA
- BC
- CP
- SU
- PT
- SVF
- ALV
- OK-VISE
- OTHER

Column for Technical Data



BP21 M/C ANGLE PLATE

- Material / Finish:
Material: Cast Iron FC300(JIS) / GG30(DIN)
Heat treated (Normalized)
Alignment Bushing: SUJ2(JIS) / 100Cr6(DIN), heat treated
Threaded Insert: S45C(JIS) / CK45(DIN), heat treated
MTP hole spacing: 50 ± 0.02
- Application: HMC / VMC.
- Features: Alignment bushing & thread insert at every hole location, easily adapts to standardized jig components.



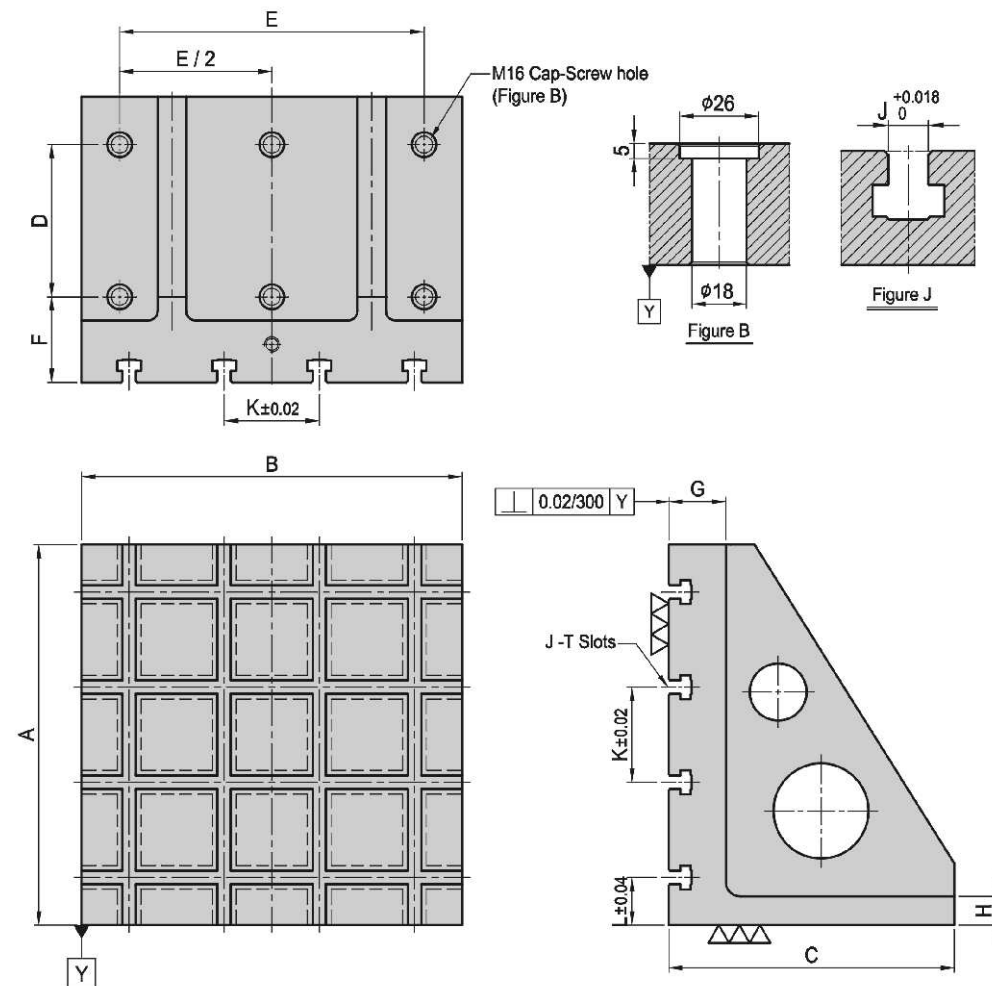
MODEL NO.	A	B	C	D	E	F	G	H	J	K	MTP	Mounting holes	kg	
BP21-220300-0300-12	300	300	220	100	250	90	40	30	φ 12	M12	75	30	6	50
BP21-280400-0400-12	400	400	280	160	320	90	40	30	φ 12	M12	75	56	6	87
BP21-340500-0500-12	500	500	340	200	400	90	50	35	φ 12	M12	75	90	6	173
BP21-435630-0630-12	630	630	435	250	500	100	50	40	φ 12	M12	40	144	6	300
BP21-525800-0800-12	800	800	525	320	640	115	50	45	φ 12	M12	75	240	6	477
BP21-220300-0300-16	300	300	220	100	250	90	40	30	φ 16	M16	75	30	6	46
BP21-280400-0400-16	400	400	280	160	320	90	40	30	φ 16	M16	75	56	6	85
BP21-340500-0500-16	500	500	340	200	400	90	50	35	φ 16	M16	75	90	6	170
BP21-435630-0630-16	630	630	435	250	500	100	50	40	φ 16	M16	40	144	6	295
BP21-525800-0800-16	800	800	525	320	640	115	50	45	φ 16	M16	75	240	6	470

*Special Design Welcome !



BP22 M/C ANGLE PLATE

- Material / Finish:
Material: Cast Iron FC300(JIS) / GG30(DIN)
Heat treated (Normalized)
- Application: HMC / VMC.
- Features: T-Slots running in 2 directions, easily adapts to standardized jig components.



MODEL NO.	A	B	C	D	E	F	G	H	J	K	L	kg
BP22-220300-0300-14	300	300	220	100	250	90	60	30	14	100	50	52
BP22-300400-0400-14	400	400	300	160	320	90	60	30	14	100	50	101
BP22-350500-0500-14	500	500	350	200	400	90	60	35	14	100	50	184
BP22-450630-0630-14	630	630	450	250	500	100	65	40	14	125	65	316
BP22-550800-0800-14	800	800	550	320	640	115	75	45	14	150	100	566
BP22-220300-0300-18	300	300	220	100	250	90	60	30	18	100	50	51
BP22-300400-0400-18	400	400	300	160	320	90	60	30	18	100	50	101
BP22-350500-0500-18	500	500	350	200	400	90	60	35	18	100	50	175
BP22-450630-0630-18	630	630	450	250	500	100	65	40	18	125	65	285
BP22-550800-0800-18	800	800	550	320	640	115	75	45	18	150	100	543

*Special Design Welcome !

BP

BPA

BC

CP

SU

PT

SVF

ALV

OK-
VISE

OTHER

Column
for
Technical
Data



BP23

MC NARROW ANGLE PLATE

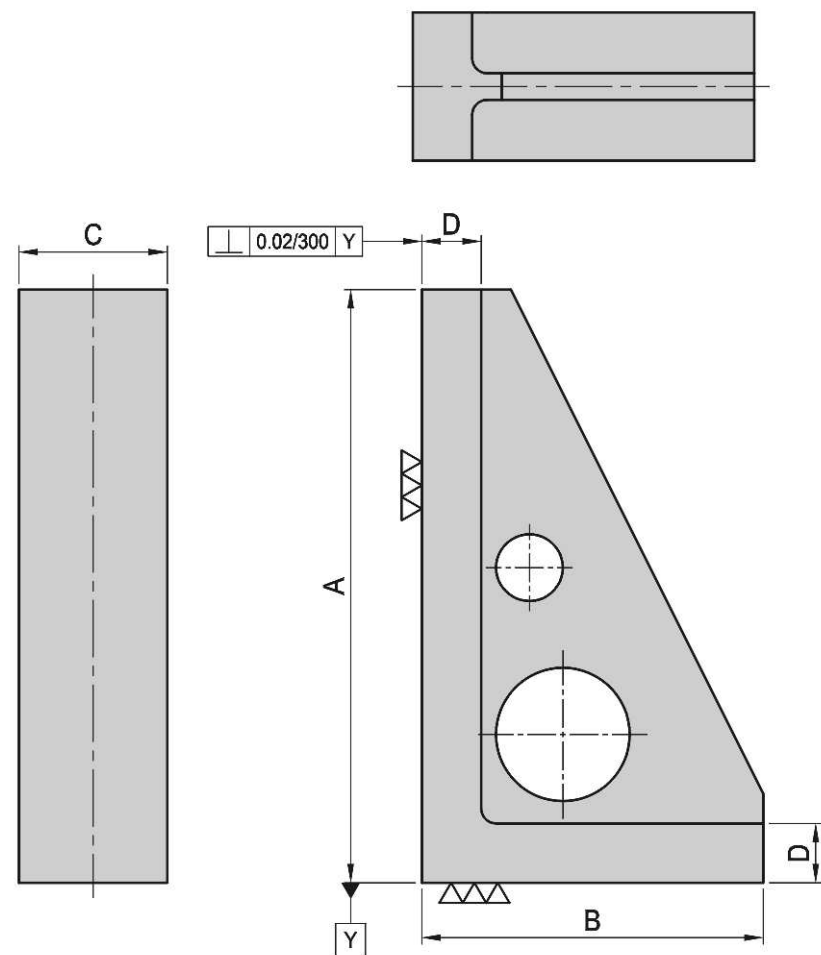
- Material / Finish:
Material: Cast Iron FC300(JIS) / GG30(DIN)
Heat treated (Normalized)
- Application: HMC / VMC.
- Features: Ready to accept a hole pattern for your special jig.



BP24

MC NARROW ANGLE PLATE

- Material / Finish:
Material: Cast Iron FC300(JIS) / GG30(DIN)
Heat treated (Normalized)
- Application: HMC / VMC.
- Features: Alignment bushing & thread insert at every hole location, easily adapts to standardized jig components.



MODEL NO.	A	B	C	D	kg
BP23-180100-0300	300	180	100	40	14
BP23-230100-0400	400	230	100	40	20
BP23-280100-0500	500	280	100	40	25

*Special Design Welcome !

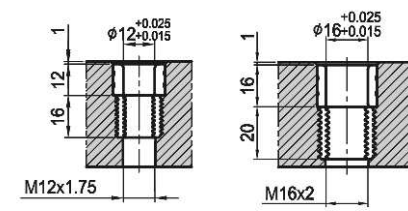


Figure T

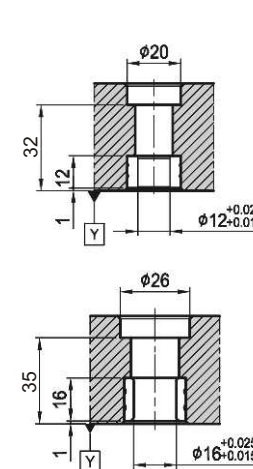
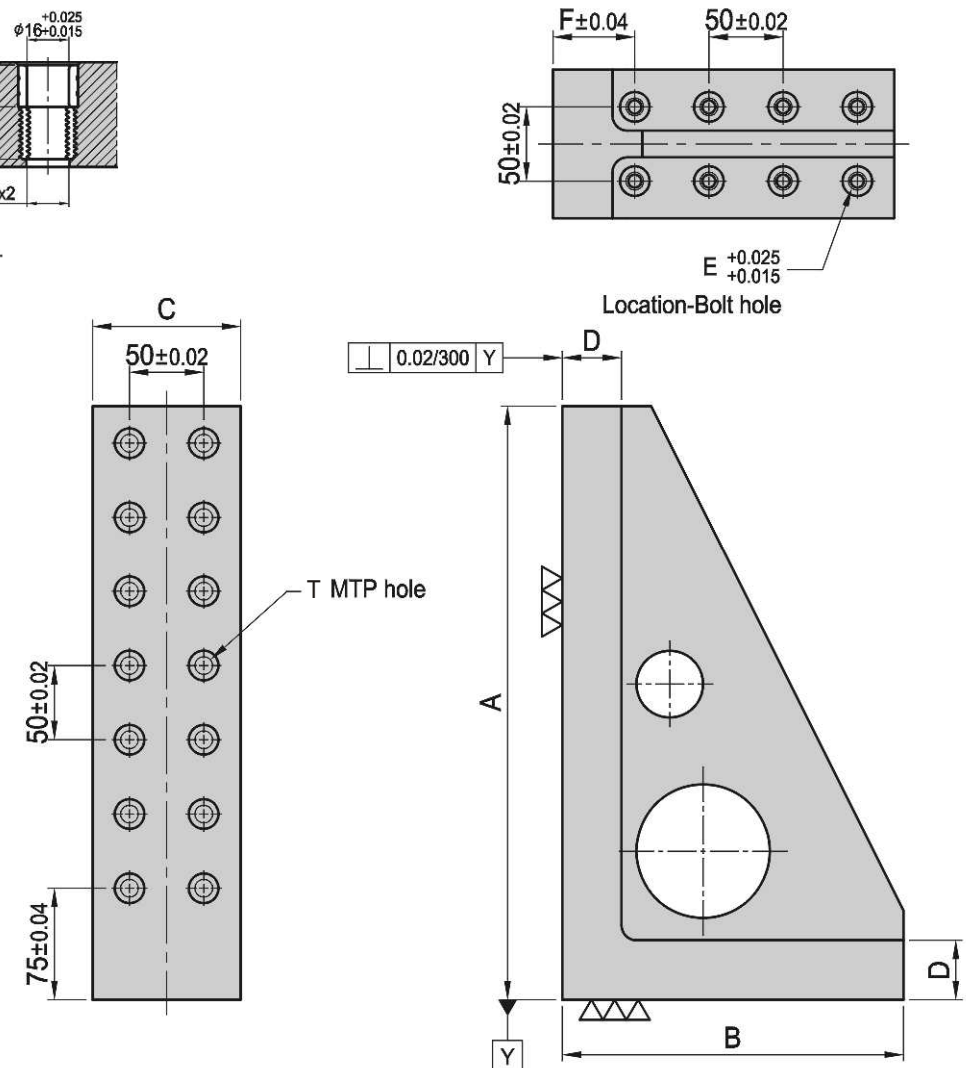


Figure E



MODEL NO.	A	B	C	D	E	F	T	MTP	Mounting holes	kg
BP24-180100-0300-12	300	180	100	40	φ 12	55	φ 12	M12	10	6
BP24-230100-0400-12	400	230	100	40	φ 12	55	φ 12	M12	14	8
BP24-280100-0500-12	500	280	100	40	φ 12	55	φ 12	M12	18	10
BP24-180100-0300-16	300	180	100	40	φ 16	55	φ 16	M16	10	6
BP24-230100-0400-16	400	230	100	40	φ 16	55	φ 16	M16	14	8
BP24-280100-0500-16	500	280	100	40	φ 16	55	φ 16	M16	18	10

*Special Design Welcome !

BP

BPA

BC

CP

SU

PT

SVF

ALV

OK-VISE

OTHER

Column for Technical Data

BP25

RECTANGULAR CAST SECTION



- Material / Finish:
Material: Cast Iron FC300(JIS) / GG30(DIN)
Heat treated (Normalized)
- Application: Cast sections provide a fast & economical way to make special jig components.
- Features: Ready to accept a hole pattern for your special jig.

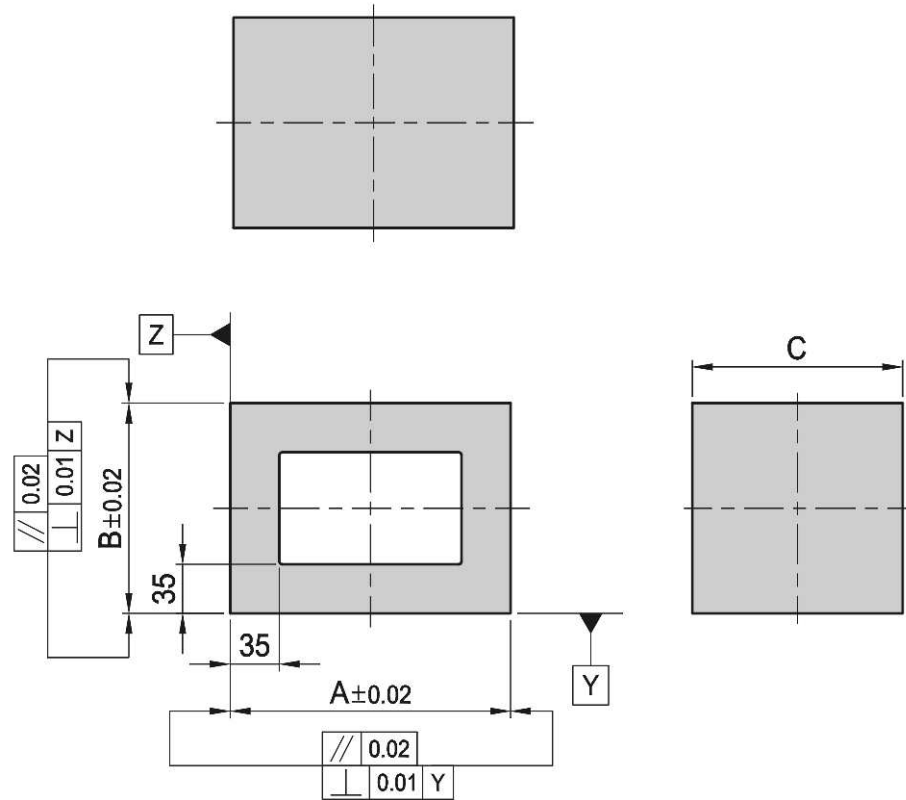
BP26

RECTANGULAR CAST SECTION



- Material / Finish:
Material: Cast Iron FC300(JIS) / GG30(DIN)
Heat treated (Normalized)
- Application: Cast sections provide a fast & economical way to make special jig components.
- Features: Alignment bushing & thread insert at every hole location, easily adapts to standardized jig components.

G
▽▽▽



G
▽▽▽

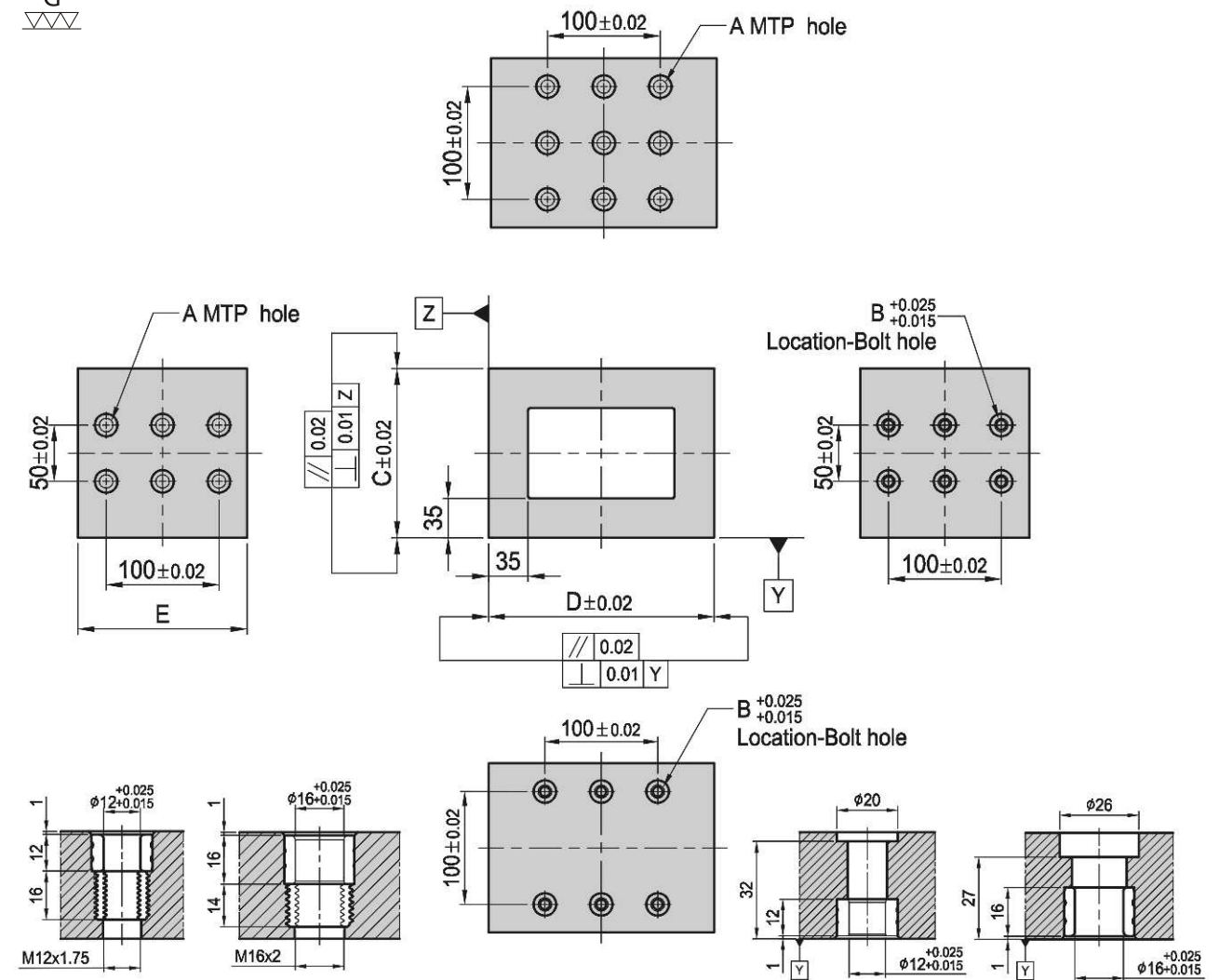


Figure A

Figure B

MODEL NO.	A	B	C	kg
BP25-200150-0150	200	150	150	22.3
BP25-250150-0200	250	200	150	37.5
BP25-300200-0250	300	250	200	55.0

*Special Design Welcome !

MODEL NO.	A	B	C	D	E	MTP	Mounting holes	kg	
BP26-200150-0150-12	φ 12	M12	φ 12	150	200	150	15	10	21.5
BP26-250150-0200-12	φ 12	M12	φ 12	200	250	150	21	14	36.5
BP26-200150-0150-16	φ 16	M16	φ 16	150	200	150	15	10	21.3
BP26-250150-0200-16	φ 16	M16	φ 16	200	250	150	21	14	36.2

*Special Design Welcome !

BP

BPA

BC

CP

SU

PT

SVF

ALV

OK-
VISE

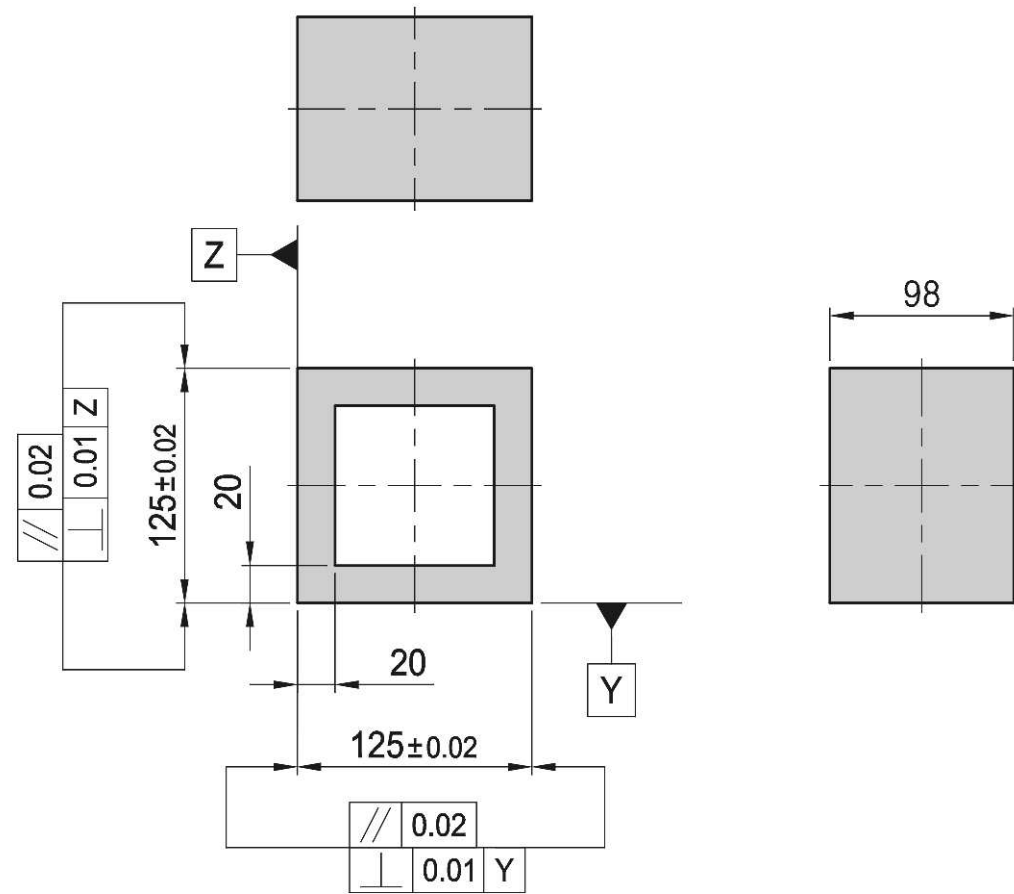
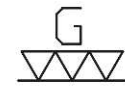
OTHER

Column
for
Technical
Data

BP27

RECTANGULAR CAST SECTION

- Material / Finish:
Material: Cast Iron FC300(JIS) / GG30(DIN)
Heat treated (Normalized)
- Application: Cast sections provide a fast & economical way to make special jig components.
- Features: Ready to accept a hole pattern for your special jig.



MODEL NO.	kg
BP27-125098-125	6

*Special Design Welcome !

BP28

RECTANGULAR CAST SECTION

- Material / Finish:
Material: Cast Iron FC300(JIS) / GG30(DIN)
Heat treated (Normalized)
- Application: Cast sections provide a fast & economical way to make special jig components.
- Features: Alignment bushing & thread insert at every hole location, easily adapts to standardized jig components.

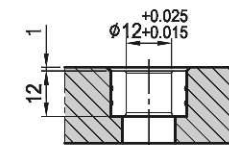
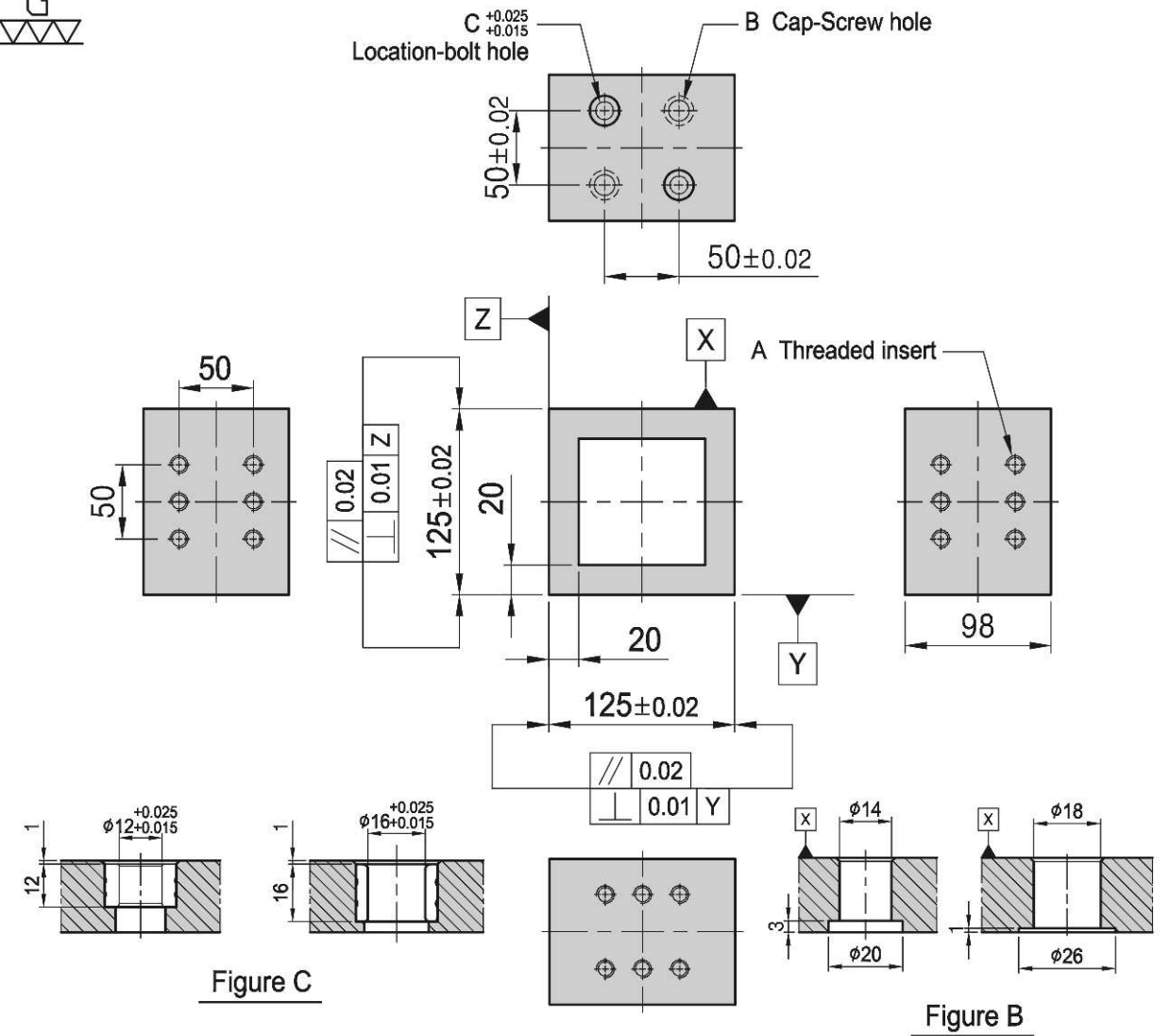


Figure C

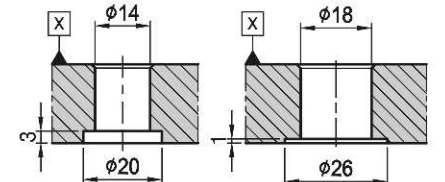
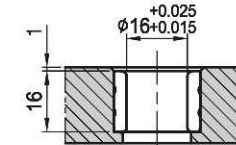


Figure B

MODEL NO.	A	B	C	kg
BP28-125098-125-12	M12	M12	φ 12	5.8
BP28-125098-125-16	M16	M16	φ 16	5.5

*Special Design Welcome !

BP

BPA

BC

CP

SU

PT

SVF

ALV

OK-VISE

OTHER

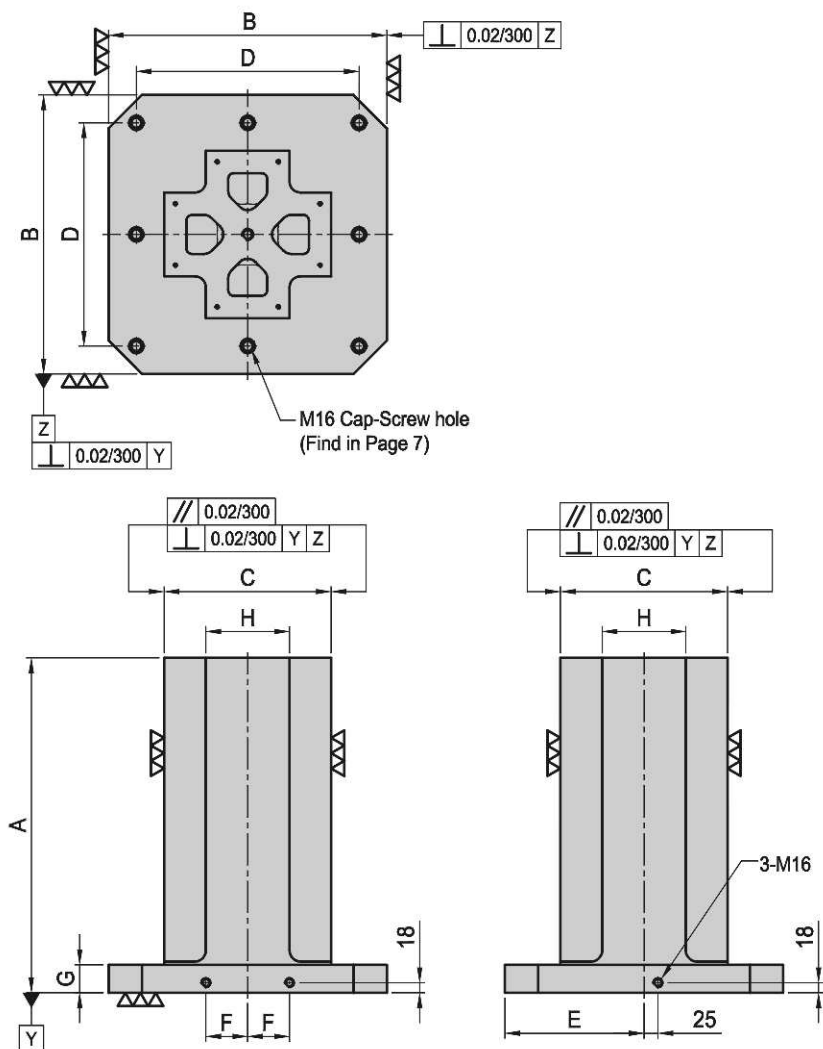
Column for Technical Data



BP29

CROSS TOOLING COLUMN

- Material / Finish:
Material: Cast Iron FC300(JIS) / GG30(DIN)
Heat treated (Normalized)
- Application: Horizontal Machining Center.
- Features: Ready to accept a hole pattern for your special jig.
• Eye bolt & top cover included.



MODEL NO.	A	B	C	D	E	F	G	H	Mounting holes	kg
BP29-400400-0500	500	400	250	320	200	55	50	125	4	166
BP29-400400-0650	650									203
BP29-500500-0600	600	500	300	400	250	75	50	150	8	264
BP29-500500-0750	750									310
BP29-630630-0700	700	630	350	500	315	100	50	200	8	402
BP29-630630-0850	850									457
BP29-800800-0800	800	800	500	640	400	135	50	300	8	698
BP29-800800-1000	1000									811

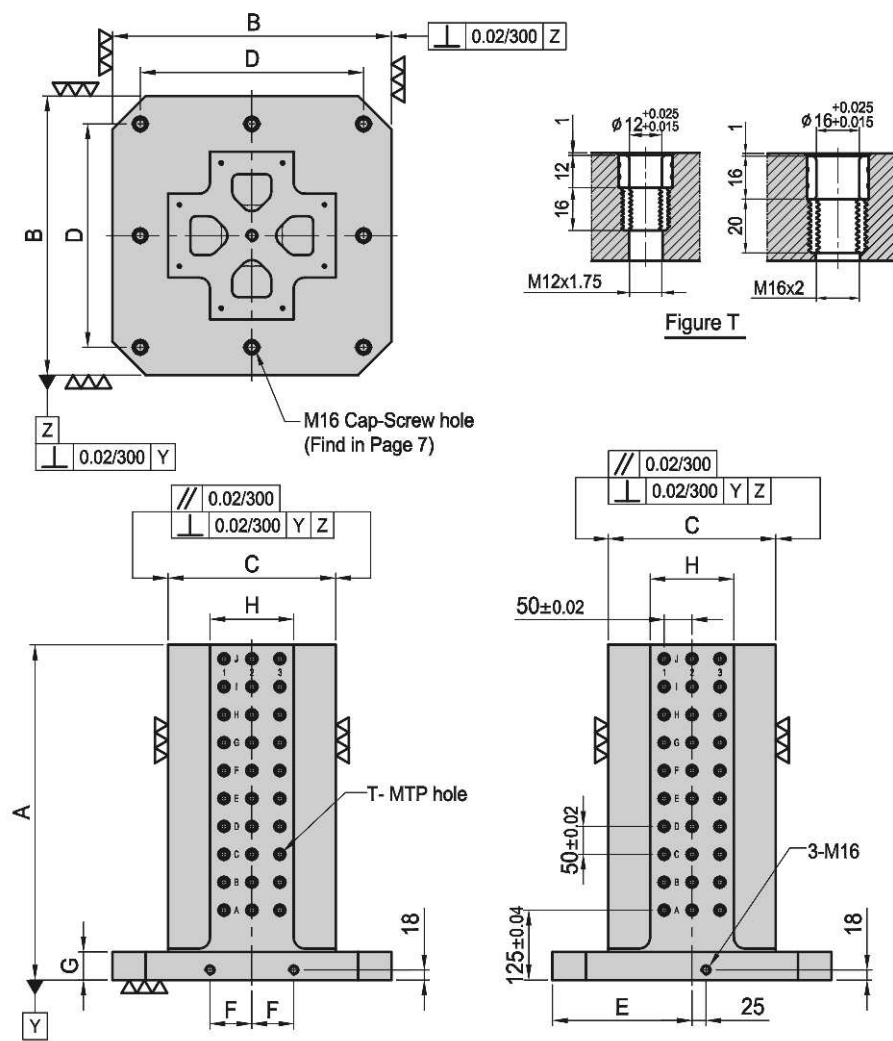
*Special Design Welcome !



BP30

CROSS TOOLING COLUMN

- Material / Finish:
Material: Cast Iron FC300 (JIS) / GG30 (DIN)
Heat treated (Normalized)
Alignment bushing: SUJ2(JIS) / 100Cr6(DIN), heat treated
Threaded Insert: S45C(JIS) / CK45(DIN), heat treated
MTP hole spacing: 50±0.02
- Application: Horizontal Machining Center.
- Features: Alignment bushing & thread insert at every hole location, easily adapts to standardized jig components.
• Eye bolt & top cover included.



MODEL NO.	A	B	C	D	E	F	G	H	T	MTP	Mounting holes	kg	MODEL NO.	A	B	C	D	E	F	G	H	T	MTP	Mounting holes	kg
BP30-400400-0500-12	500	400	250	320	200	55	50	125	φ12	M12	64	166	BP30-400400-0500-16	500	400	250	320	200	55	50	125	φ16	M16	64	166
BP30-400400-0650-12	650										88	203	BP30-400400-0650-16	650										88	203
BP30-500500-0600-12	600	500	300	400	250	75	50	150	φ12	M12	120	264	BP30-500500-0600-16	600	500	300	400	250	75	50	150	φ16	M16	120	264
BP30-500500-0750-12	750										156	310	BP30-500500-0750-16	750										156	310
BP30-630630-0700-12	700	630	350	500	315	100	50	200	φ12	M12	192	402	BP30-630630-0700-16	700	630	350	500	315	100	50	200	φ16	M16	192	402
BP30-630630-0850-12	850										240	457	BP30-630630-0850-16	850										240	457
BP30-800800-0800-12	800	800	500	640	400	135	50	300	φ12	M12	336	698	BP30-800800-0800-16	800	800	500	640	400	135	50	300	φ16	M16	336	698
BP30-800800-1000-12	1000										432	811	BP30-800800-1000-16	1000										432	811

*Special Design Welcome !

BP

BPA

BC

CP

SU

PT

SVF

ALV

OK-
VISE

OTHER

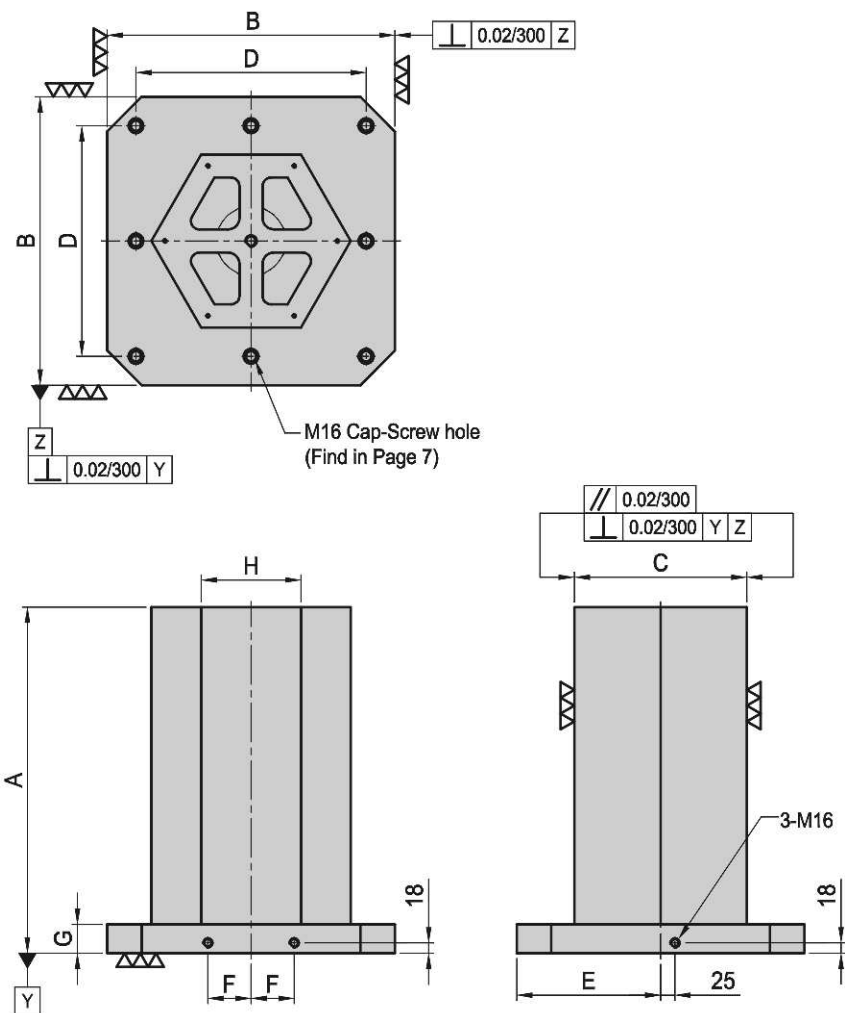
Column
for
Technical
Data



BP31

HEXAGONAL CUBE

- Material / Finish:
Material: Cast Iron FC300(JIS) / GG30(DIN)
Heat treated (Normalized)
- Application: Horizontal Machining Center.
- Features: Ready to accept a hole pattern for your special jig.
- Eye bolt & top cover included.



MODEL NO.	A	B	C	D	E	F	G	H	Mounting holes	kg
BP31-400400-0500	500	400	250	320	200	55	50	144	4	164
BP31-400400-0650	650									198
BP31-500500-0600	600	500	300	400	250	75	50	173	8	250
BP31-500500-0750	750									293
BP31-630630-0700	700	630	350	500	315	100	50	202	8	406
BP31-630630-0850	850									457
BP31-800800-0800	800	800	500	640	400	135	50	289	8	667
BP31-800800-1000	1000									767

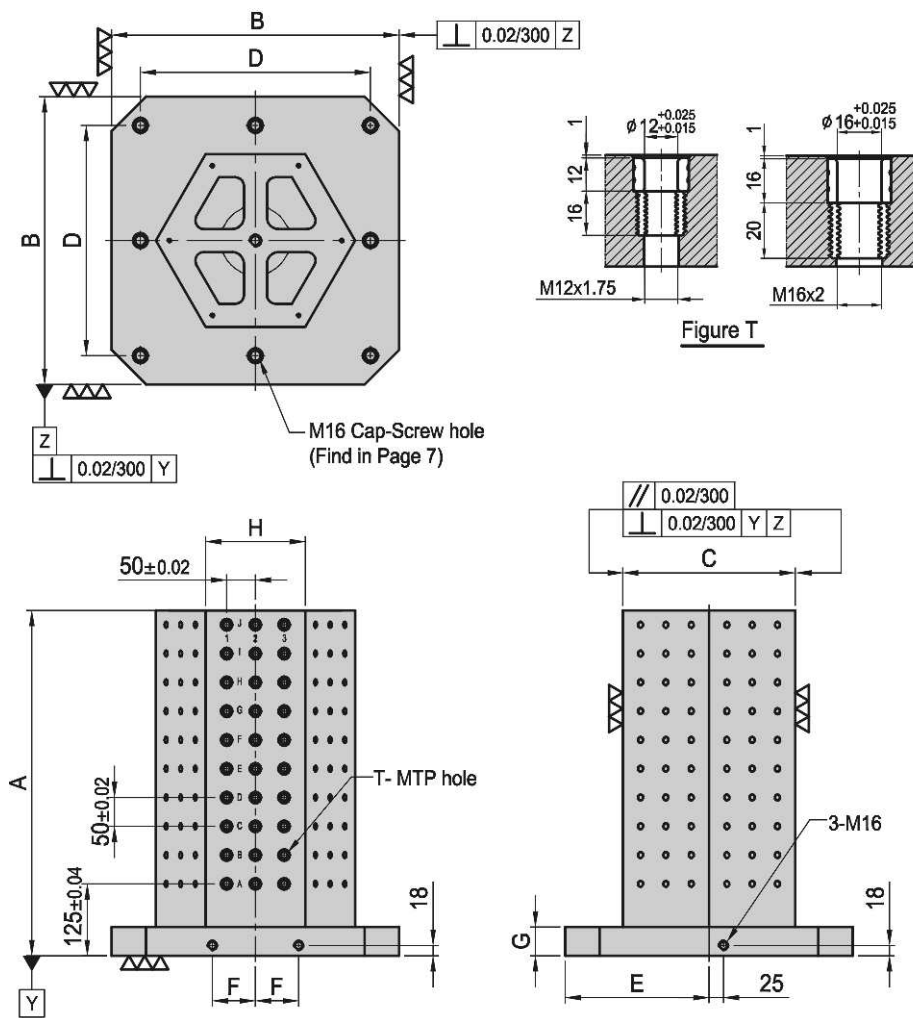
*Special Design Welcome !



BP32

HEXAGONAL CUBE

- Material / Finish:
Material: Cast Iron FC300 (JIS) / GG30 (DIN)
Heat treated (Normalized)
- Alignment bushing: SUJ2(JIS) / 100Cr6(DIN), heat treated
- Threaded Insert: S45C(JIS) / CK45(DIN), heat treated
- MTP hole spacing: 50 ± 0.02
- Application: Horizontal Machining Center.
- Features: Alignment bushing & thread insert at every hole location, easily adapts to standardized jig components.
- Eye bolt & top cover included.



MODEL NO.	A	B	C	D	E	F	G	H	T	MTP	Mounting holes	kg	MODEL NO.	A	B	C	D	E	F	G	H	T	MTP	Mounting holes	kg		
BP32-400400-0500-12	500	400	250	320	200	55	50	144	$\phi 12$	M12	96	4	164	BP32-400400-0500-16	500	400	250	320	200	55	50	144	$\phi 16$	M16	96	4	164
BP32-400400-0650-12	650										132	198	BP32-400400-0650-16	650	132										198		
BP32-500500-0600-12	600	500	300	400	250	75	50	173	$\phi 12$	M12	180	8	250	BP32-500500-0600-16	600	500	300	400	250	75	50	173	$\phi 16$	M16	180	8	250
BP32-500500-0750-12	750										234	293	BP32-500500-0750-16	750	234										293		
BP32-630630-0700-12	700	630	350	500	315	100	50	202	$\phi 12$	M12	216	8	406	BP32-630630-0700-16	700	630	350	500	315	100	50	202	$\phi 16$	M16	216	8	406
BP32-630630-0850-12	850										270	457	BP32-630630-0850-16	850	270										457		
BP32-800800-0800-12	800	800	500	640	400	135	50	289	$\phi 12$	M12	420	8	667	BP32-800800-0800-16	800	800	500	640	400	135	50	289	$\phi 16$	M16	420	8	667
BP32-800800-1000-12	1000										540	767	BP32-800800-1000-16	1000	540										767		

*Special Design Welcome !

BP

BPA

BC

CP

SU

PT

SVF

ALV

OK-VISE

OTHER

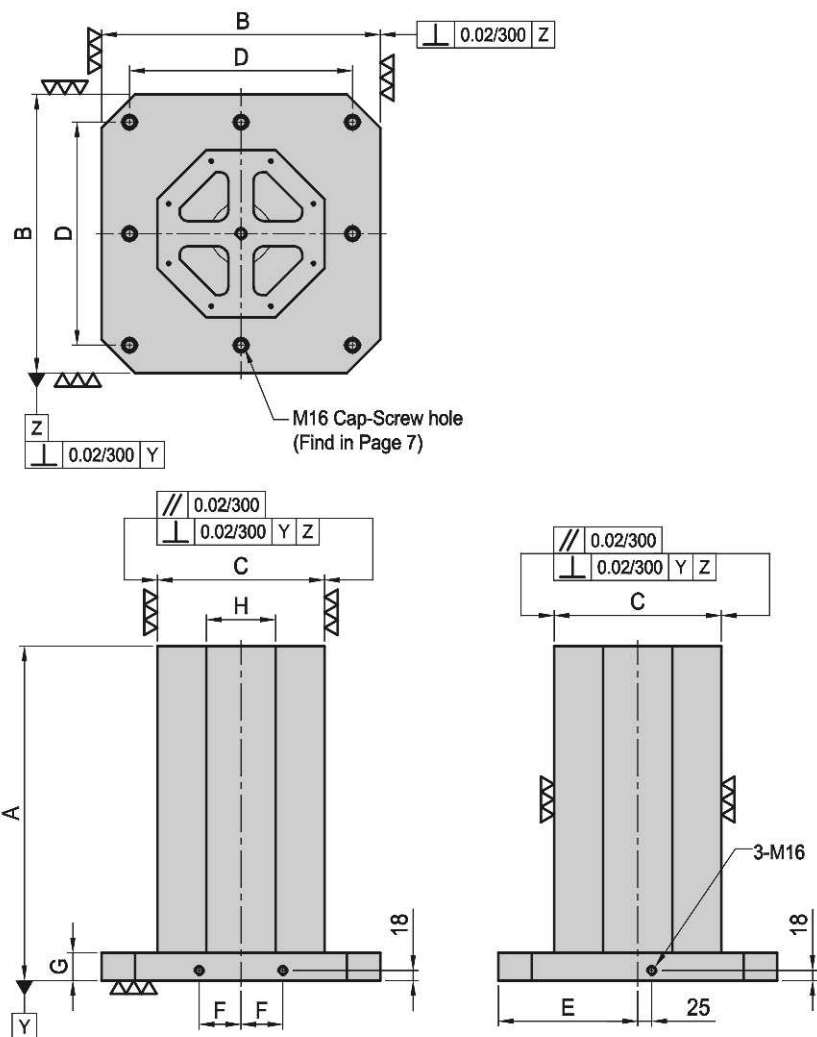
Column for Technical Data



BP33

OCTAGONAL CUBE

- Material / Finish:
Material: Cast Iron FC300(JIS) / GG30(DIN)
Heat treated (Normalized)
- Application: Horizontal Machining Center.
- Features: Ready to accept a hole pattern for your special jig.
• Eye bolt & top cover included.



MODEL NO.	A	B	C	D	E	F	G	H	Mounting holes	kg
BP33-400400-0500	500	400	250	320	200	55	50	103	4	160
BP33-400400-0650	650									193
BP33-500500-0600	600	500	300	400	250	75	50	124	8	245
BP33-500500-0750	750									285
BP33-630630-0700	700	630	350	500	315	100	50	145	8	393
BP33-630630-0850	850									442
BP33-800800-0800	800	800	500	640	400	135	50	207	8	693
BP33-800800-1000	1000									789

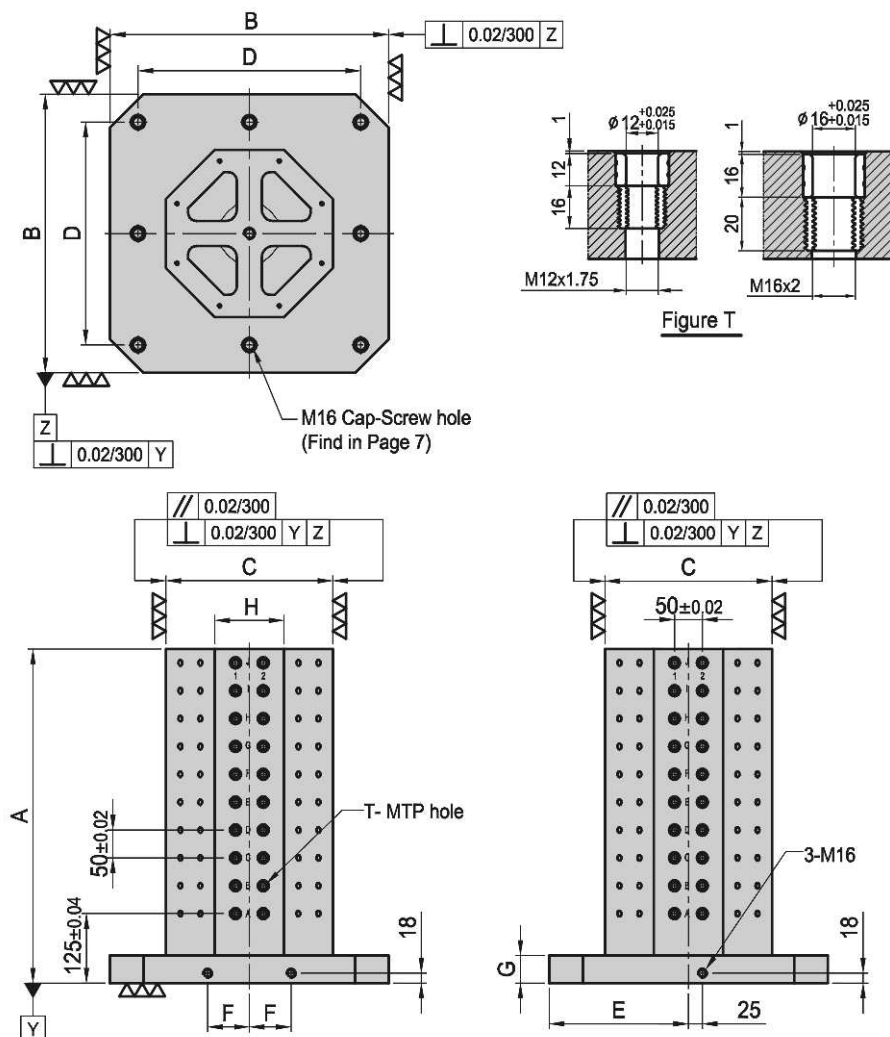
*Special Design Welcome !



BP34

OCTAGONAL CUBE

- Material / Finish:
Material: Cast Iron FC300 (JIS) / GG30 (DIN)
Heat treated (Normalized)
Alignment bushing: SUJ2(JIS) / 100Cr6(DIN), heat treated
Threaded Insert: S45C(JIS) / CK45(DIN), heat treated
MTP hole spacing: 50 ± 0.02
- Application: Horizontal Machining Center.
- Features: Alignment bushing & thread insert at every hole location, easily adapts to standardized jig components.
• Eye bolt & top cover included.



MODEL NO.	A	B	C	D	E	F	G	H	T	MTP	Mounting holes	kg	MODEL NO.	A	B	C	D	E	F	G	H	T	MTP	Mounting holes	kg		
BP34-400400-0500-12	500	400	250	320	200	55	50	103	$\phi 12$	M12	128	4	160	BP34-400400-0500-16	500	400	250	320	200	55	50	103	$\phi 16$	M16	128	4	160
BP34-400400-0650-12	650										176	193	BP34-400400-0650-16	650	176										193		
BP34-500500-0600-12	600	500	300	400	250	75	50	124	$\phi 12$	M12	160	8	245	BP34-500500-0600-16	600	500	300	400	250	75	50	124	$\phi 16$	M16	160	8	245
BP34-500500-0750-12	750										208	285	BP34-500500-0750-16	750	208										285		
BP34-630630-0700-12	700	630	350	500	315	100	50	145	$\phi 12$	M12	192	8	393	BP34-630630-0700-16	700	630	350	500	315	100	50	145	$\phi 16$	M16	192	8	393
BP34-630630-0850-12	850										240	442	BP34-630630-0850-16	850	240										442		
BP34-800800-0800-12	800	800	500	640	400	135	50	207	$\phi 12$	M12	448	8	693	BP34-800800-0800-16	800	800	500	640	400	135	50	207	$\phi 16$	M16	448	8	693
BP34-800800-1000-12	1000										576	798	BP34-800800-1000-16	1000	576										798		

*Special Design Welcome !

BP

BPA

BC

CP

SU

PT

SVF

ALV

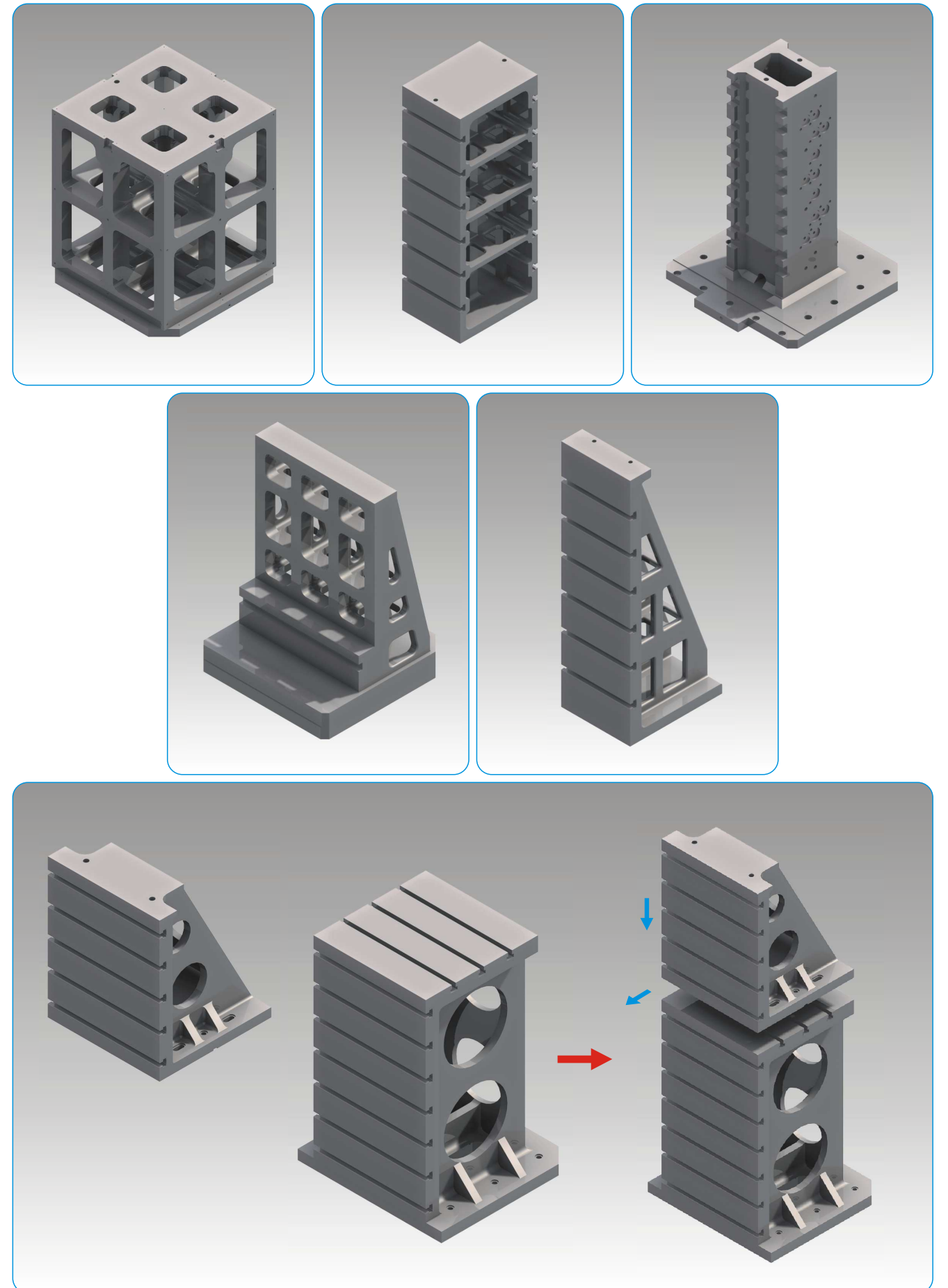
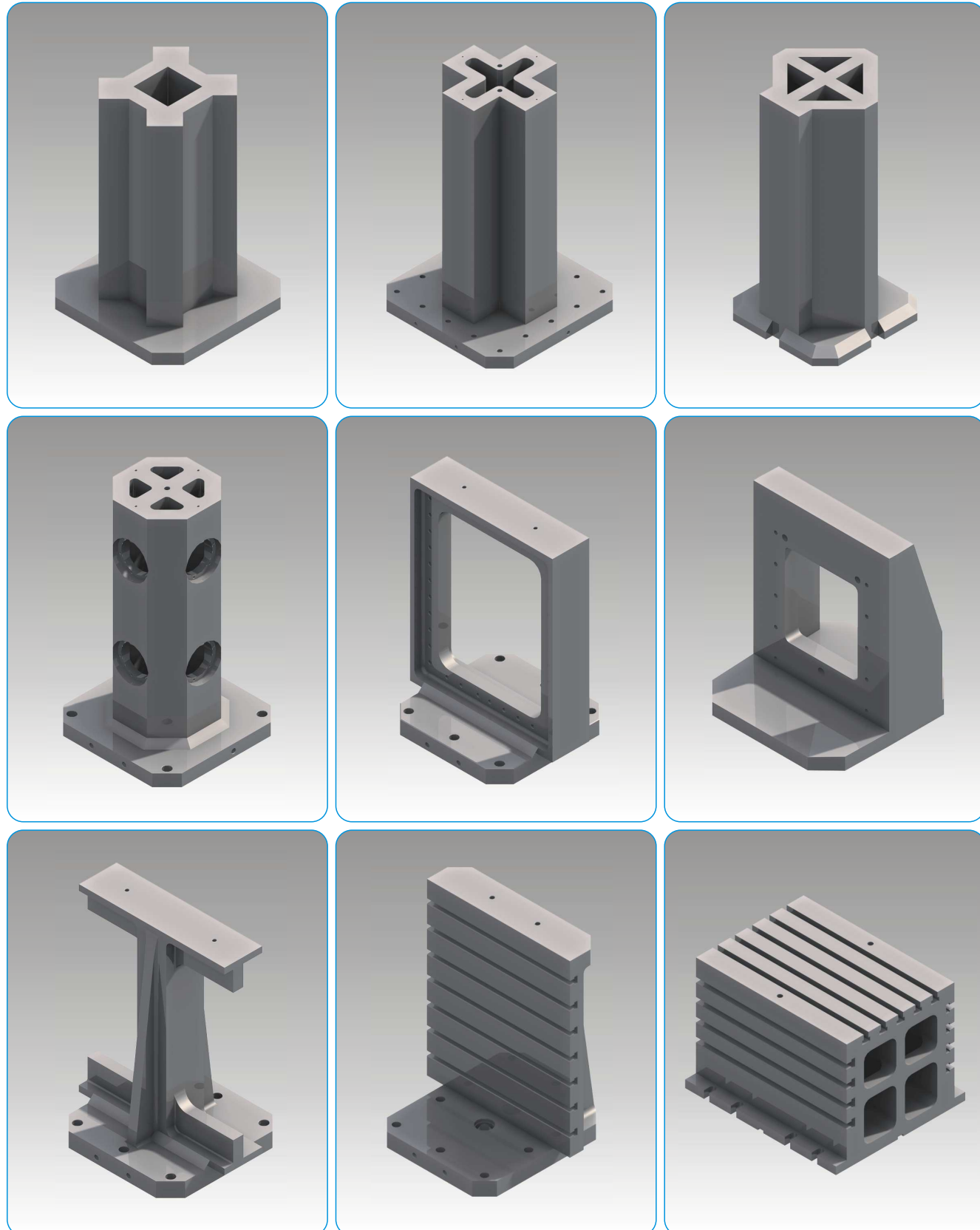
OK-
VISE

OTHER

Column
for
Technical
Data

BP-SPECIAL

WE CAN BUILD YOUR OWN SPECIAL DESIGN
UP TO 1500mm x 1500mm x 1500mm



BP

BPA

BC

CP

SU

PT

SVF

ALV

OK-
VISE

OTHER

Column
for
Technical
Data